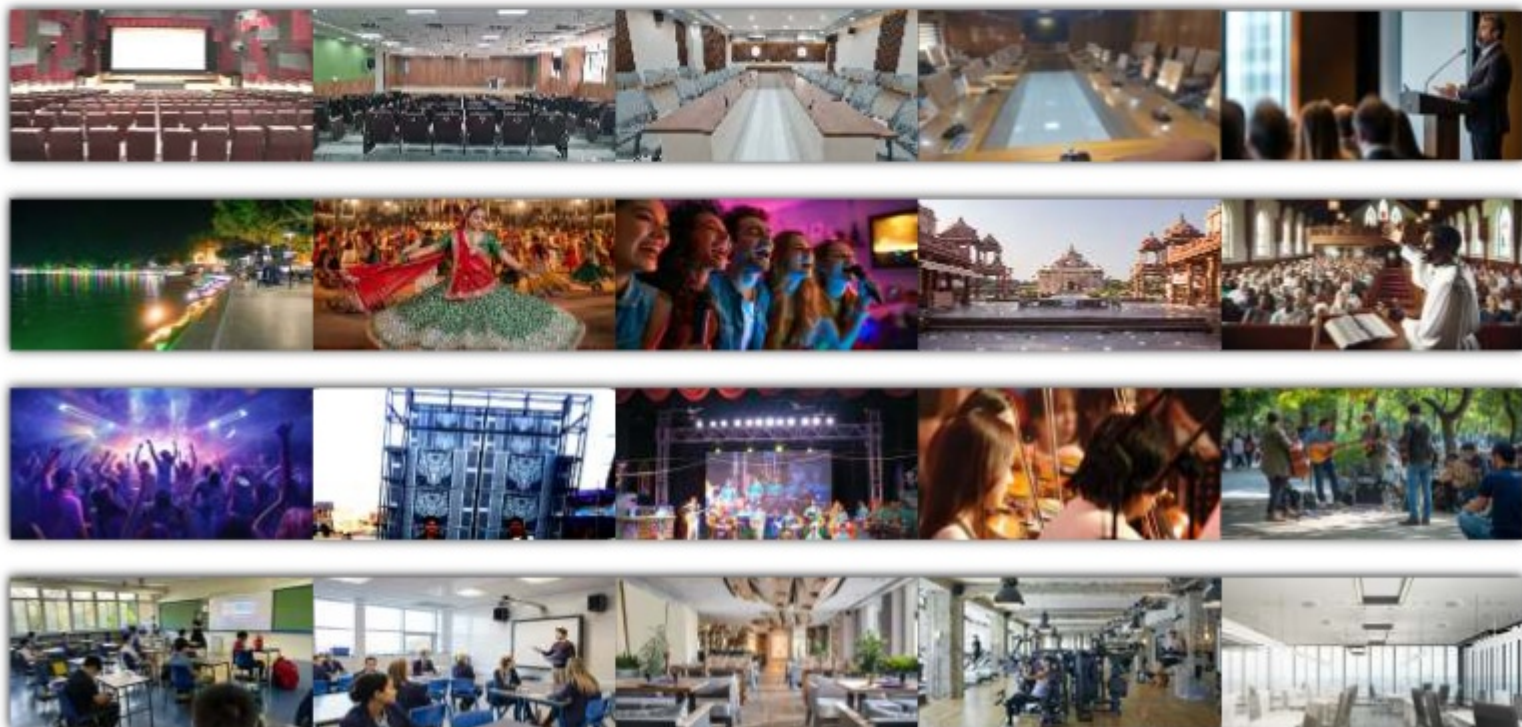




PRODUCT CATALOGUE - 2026

Professional PA System Solutions



CKS Acoustics India Private Limited traces its roots back in the Shah Group of Companies, established in 1966 by visionary entrepreneur Mr. Chandrakant Kanaiyalal Shah. The Shah Group initially focussed on scientific and audio-visual equipment and quickly earned a reputation for innovation and excellence.



Late Shri CHANDRAKANT KANAIYALAL SHAH
(CKS)
FOUNDER SHAH GROUP

With nearly six decades of industry experience, this legacy was carried forward when CKS Acoustics was officially founded in 2019 by Mr. Chandrakant Shah, who founded as the Chairman. The Shah Group of Companies, continues the group's tradition of quality and innovation in a modern context.



CKS Acoustics is led by a team of three experienced directors: Akshay Chandrakant Shah, Rakshit Chandrakant Shah, and Prakshep Chandrakant Shah. Each director plays a hands-on role in product design, development, and market integration. Their combined industry knowledge and commitment to innovation ensure that the company remains at the forefront of professional audio, video, light and energy solutions.





Welcome to CKS Acoustics, we are committed to being a leader in our industry and creating a better future for ourselves and our customers. Our vision is to become one of the largest and finest manufacturers of pro-audio equipment, while also becoming the most iconic brand in the upcoming era of AI-powered language.

To achieve our vision, we are focused on several key areas:

INNOVATIONS: We believe that staying at the forefront of technological innovation is critical to our success. Hence, we invest heavily in research and development, and work closely with our customers to understand their evolving needs and preferences.

QUALITY: Our reputation is built on the quality of our products and services. We are committed to maintaining the highest standards of quality in everything we do, from product design and manufacturing to customer support and after-sales service.

RESEARCH & DEVELOPMENT

CKS ACOUSTICS has own well equipped research and development (R & D) department with highly skilled engineers who are delivering high class products in the audio industry since 60 years.

Under the vision of "Innovations for better tomorrow" CKS ACOUSTICS research is actively conducting research and development (R & D) to identify new future growth areas and secure advanced technologies for its products to create new experience.

CUSTOMER SATISFACTION: At CKS our customer centric approach has set high industry standards for pro audio, stage light & energy solutions. We are dedicated to providing them exceptional products, services and experiences that meet their needs and exceed their expectations.

SOCIAL RESPONSIBILITIES: As a responsible corporate citizen, we are committed to making a positive impact on the world around us. We strive to operate in an ethical and sustainable manner, and to support initiatives that promote social and environmental well-being.

We believe that by staying true to our vision and values, we can build a successful and sustainable business that makes a difference in the world. Thank you for joining us on this journey.



MEMORABLE EVENTS

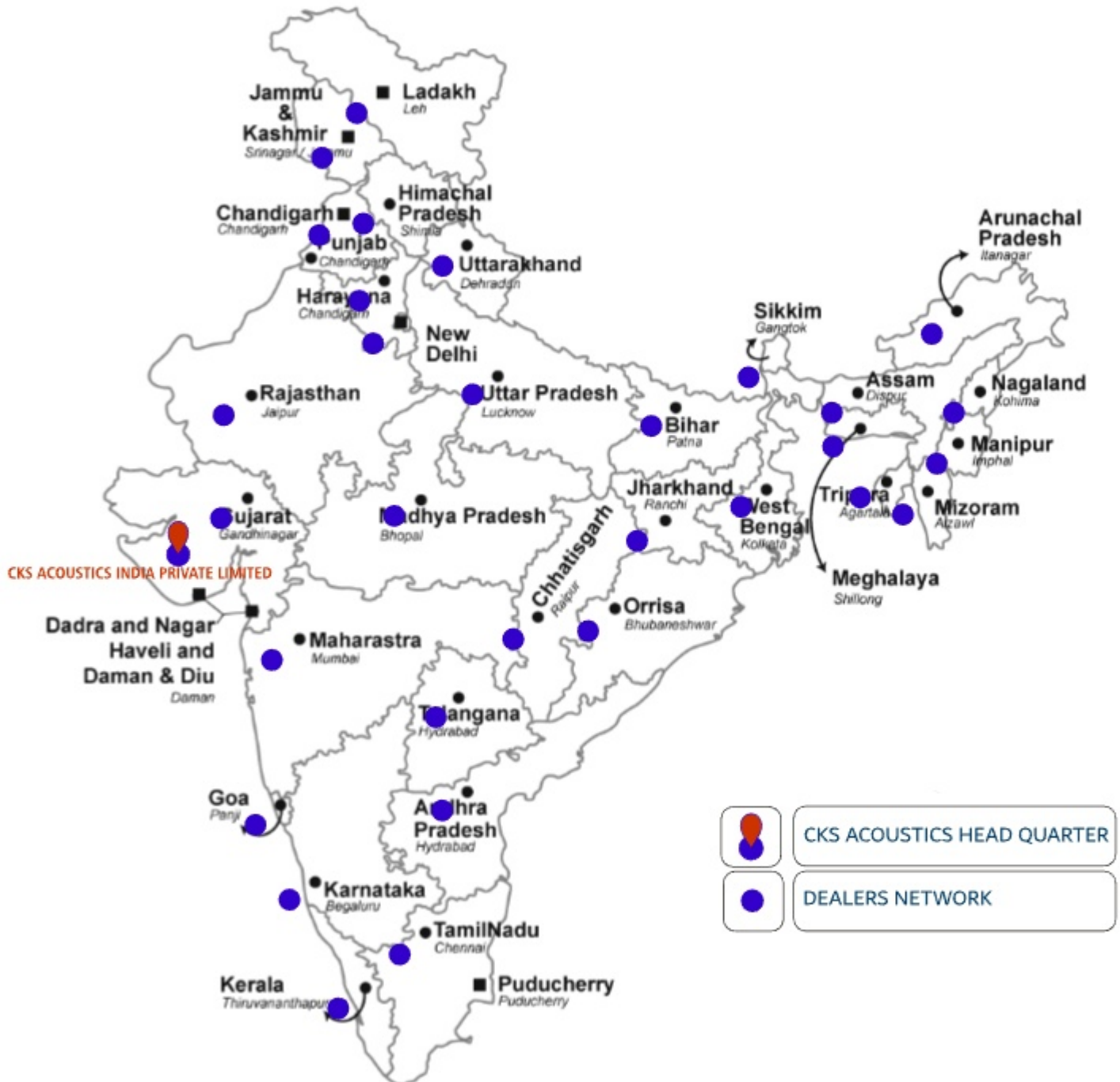




www.cksacoustics.com

COUNTRY WIDE SALE NETWORK

Across India, CKS ACOUSTICS products are marketed and supported through an expansive distribution network of more than 302 dealers and retailers, reinforcing the company's commitment to accessibility, trust, and long-term customer relationships.



For dealership or any further inquiry :

✉ info@cksacoustics.com | sales@cksacoustics.com

☎ +91 87585 10980

☎ +91 99780 10980

07

MICROPHONES

Dynamic Microphone
Condenser Microphone
Boundary Microphone
Hanging Microphone
Antenna Distribution System
UHF Wireless Microphone
Wireless Microphone

17

AUDIO MIXERS

BMS Series
CKM Series
Planet M
CFX Series
Active Crossover
Digital Audio Processor

23

PORTABLE PA SYSTEM

3 Way - 12"
2 Way - 10" Dual
3 Way - 8" Dual
PA & Instrument - 8"
Guitar & PA Amplifier

28

PODIUM

Analog Podium
Digital Podium

29

AMPLIFIERS

Dual Channel Power Amplifier
Class H Power Amplifier
Class D Power Amplifier
Titan Series Amplifier
Booster Amplifier
Two Zone PA Amplifier
Installation Amplifier
PA Mixer Amplifier

38

STABILIZER

3KVA Manual Auto-cut
5KVA Manual Auto-cut
7.5KVA Manual Auto-cut
10KVA Manual Auto cut
15KVA Manual Auto-cut

39

SPEAKER CABINET

Ceiling Speaker
PA Column Speaker
Rock Speaker
Wall Mount Speaker
Bi-directional Speaker
Speaker Cabinet
Line Array

48

SPEAKER COMPONENT

21" Professional Bass
18" Professional Bass
15" Mid-Bass
12" Mid Bass
10" Mid Bass
Professional HF Driver
Crossover Network

53

CONFERENCE SYSTEM

Wired Conference System
Digital Conference System
Camera Tracking, Discussing
& Voting
Wireless Conference System
Digital Signal Processor

MICROPHONES



www.cksacoustics.com



DYNAMIC MICROPHONES

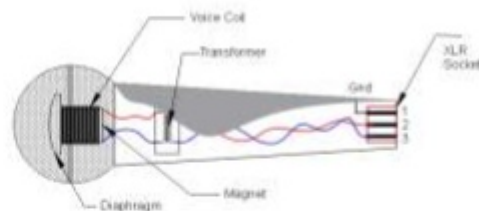
CKM-111 / CKM-222 / CKM-333 / CKM-444



CKM-111



CKM-222



CKS ACOUSTICS Dynamic Microphone is your perfect companion for both professional and personal use. Either you're a performer, podcaster, content creator, or sound engineer, Dynamic Microphone provides clear, reliable sound quality that can stand up to any performance or recording situation.



CKM-333



CKM-444

Durable Construction : Built to last, the Dynamic Microphone can withstand rough handling and high-pressure environments, making it the ideal choice for live performance and traveling musicians.

Wide Frequency Response : Capture every nuance of sound with a wide frequency range that ensures a natural and clear sound reproduction.

High Sound Pressure Level (SPL) Tolerance : Designed for high-pressure sound levels, Dynamic Microphones are perfect for loud instruments and voices, delivering distortion-free audio even at peak volumes.

No External Power Needed : Operates without requiring any external power source, making it easy to plug-and-play with any audio set-up.

Versatile Applications : Ideal for podcasts, broadcasting, stage performances, interviews, and more. The Dynamic Microphone is perfect for any audio needs.

SPECIFICATION	CKM-111	CKM-222	CKM-333	CKM-444
Type	Dynamic capsule	Dynamic capsule	Dynamic capsule	Dynamic capsule
Polar pattern	Cardioid	Cardioid	Cardioid	Cardioid
Frequency response	40Hz-15KHz	40Hz-14KHz	40Hz-14KHz	40Hz-16KHz
Sensitivity	-30±3dB	-34±3dB	-34±3dB	-28±3dB
Impedance	600Ω±30% @ 1KHz	600Ω±30%	600Ω±30%	600Ω±30%
Material	Plastic	Metal	Metal	Metal



www.cksacoustics.com

CONDENSER MICROPHONES

CKM-555C / CKM-666C



CKM-555C



CKM-666C

- Capture Every Detail Whether you're recording vocals, podcasts, instruments, or live streams, the CKM-555C & CKM-666C Mic delivers studio-grade audio with stunning clarity and depth.
- High-Sensitivity Cardioid Capsule – Perfect for isolating your voice and reducing background noise.
- Wide Frequency Response (30Hz-18KHz) – Every note, nuance, and tone captured beautifully.
- Low Self-Noise – Pure, clean recordings without the hiss.
- Phantom Power Compatible (48V) – Works with all standard audio interfaces and mixers.

SPECIFICATION	CKM-555C	CKM-666C
Type	Condenser capsule	Condenser capsule
Frequency response	30Hz-18KHz	30Hz-18KHz
Impedance	600Ω±30%	600Ω±30%
Sensitivity	-40dB±3dB O/P	-40dB±3dB O/P
Current consumption	500μA	500μA

CKM-999SC



SPECIFICATION	CKM-999SC
Polar	Super-Cardioid
Material	Metal
Frequency response	30Hz-18KHz
Impedance	600Ω±30%
Sensitivity	-44dB±3dB



BOUNDARY MICROPHONES

CKS Acoustics Boundary Microphone is a heart-shaped directional flat microphone, designed for flat placement applications, provides high-quality audio, conference, for drama at stage boundary professional recording, television broadcasting and other demanding audio applications and comes with programmable switch at bottom.

CKB-393C

FEATURES :

- Light-touch electronic switch of the microphone can be set in three modes.
- Electronic switches can be set to connect external equipment and controlled remotely by switches on the microphone.
- Pointing characteristics : half-heart-shaped single-pointing.
- It provide ultra-quiet electronic switches that control microphone receiver operation and display the status of LEDs on the microphone.

SPECIFICATION	CKB-393C
Frequency response	30Hz-20KHz
Sensitivity	-34dB(19.9mV)@1V, @1Pa
Resistance	200Ω
High-pass filtering	80Hz, 18dB/octave
Max. I/P SPL	130dB sound pressure, 1KHz@1%THD
Dynamic range	104dB, 1KHz @ max. sound pressure
S/N ratio	68dB, 1KHz @ 1Pa
Phantom power supply	DC 11 to 52V DC, power consumption 3mA
Output connection head	Built-in TB3M Cannon head
Size	W84 x H23 x D108
Weight	266g

CKO-202C

HANGING MICROPHONE

FEATURES :

- Frequency response for accurate sound
- Polar pattern for application
- High Sensitivity and wide frequency range
- Ideal for stage and Drama

SPECIFICATION	CKO-202C
Type	Condenser
Frequency response	50Hz-17KHz
Signal to noise ratio	66.0
Dynamic range	96.5dB
Power requirements	48V phantom power



www.cksacoustics.com

WIRELESS MICROPHONE

Why UHF?

Though the VHF range offered the benefit of good propagation due to longer wavelengths, several features of the UHF range eventually dominated the interest of most manufacturers and users. A combination of larger frequency range (222 MHz UHF vs. 42 MHz VHF), smaller antennas (UHF less than half the size of VHF), and dramatic radio circuitry advances have all but eliminated VHF systems from the current landscape. Present UHF systems offer much greater performance capabilities than historical VHF systems and at comparable or even lower cost.

Although the UHF television band has been reduced by regulatory agencies, it remains the largest contiguous block of radio spectrum

in most countries, particularly in the India. In response, UHF wireless systems have become considerably more efficient in bandwidth use and continue to offer large numbers of simultaneous systems at reasonable cost.

For that reason, the UHF band is expected to remain the primary range for professional wireless audio use.

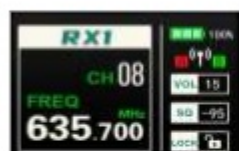
This Wireless system has built-in digital chip. It is more reliable wireless system and easy to operate. The system is fit for home singing, educational institute, meeting-room and outdoor performing.



ANTENNA DISTRIBUTION SYSTEM

CWM-114 / CWM-224

CWM-114

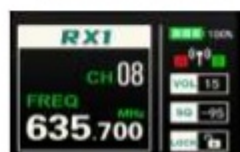


Specification :

- **Receiver : (True diversity)**
- Receiving mode : Double tuner automatic signal selection
- Frequency range : 600 - 690MHz (Custom frequency range available on request)
- Modulation mode : FM
- Oscillation mode : Digital modulation frequency synthesis
- Sensitivity : -45Hz - 18KHz \pm 3dB
- Bandwidth : 90MHz
- Comprehensive frequency response : When input is 6dBV, S/N > 60dB
- Power supply : DC 12V ~ 16V 10W
- Output sockets : XLR balanced and 6.3 unbalanced sockets

- **Body-pack Transmitter :**
- Frequency band : 600-690MHz
- Oscillation mode : PLL phase locked frequency synthesis
- Harmonic radiation : More than 50dBm lower than the main wave
- Maximum deviation : \pm 45KHz
- Input socket : 3.5mm
- RF power output : 10mW / 30mW
- Battery consumption : approx- 8 Hrs.*

CWM-224



- **Receiver : (True diversity)**
- Receiving mode : Double tuner automatic signal selection
- Frequency range : 600 - 690MHz (can do required freq.)
- Modulation mode : FM
- Oscillation mode : Digital modulation frequency synthesis
- Sensitivity : -45Hz - 18KHz \pm 3dB
- Bandwidth : 90MHz
- Comprehensive frequency response : When input is 6dBV, S/N > 60dB
- Power supply : DC 12V ~ 16V 10W
- Output sockets : XLR balanced and 6.3 unbalanced sockets
- Operation temperature : 10°C ~ 60°C

- **Handheld Transmitter :**
- Carrier band : 600-690MHz (can do required freq.)
- Oscillation mode Harmonic radiation : PLL phase locked frequency synthesis
- Bandwidth : 90MHz
- Maximum offset Head : \pm 45KHz
- RF power output : 10mW / 30mW
- Battery consumption : approx-8 Hrs.*

ANTENNA DISTRIBUTION SYSTEM CAD-8200



www.cksacoustics.com

Spectrum Management Controller



Functional features:

- The spectrum management controller specially developed for wireless frequency management adopts a high-definition IPS color display screen: It shows the scan frequency function and monitors the wireless frequency status in real time.
- Create a stable wireless working environment for the site.
- ANTENNA : Receives on-site radio signals. It also provides a DC12V / 150mA power supply for use by devices such as antennas.

Distribution parameters:

- Ultra-wideband, 8 channels antenna distribution system with ultra-low internal modulation distortion, and four AC 12V power interfaces.
- The precise circuit design features ultra-low noise and low inter-modulation distortion, and can eliminate mixing interface when multiple channels are used simultaneously.
- Frequency range : 450MHz - 950MHz
- Total gain : 0dB, ± 1 dB
- Input / Output impedance : 50 Ω
- Antenna power supply : +8V DC / 150mA, with the central point as the positive pole.
- DC output : 12V DC / 3A (MAX) x 4 groups of central points as positive poles

Directional antenna parameters :

- The adjustable gain setting enables the amplifier multiple to be adjusted according to the actual situation on site, which is used for enhancing and amplifying signal reception. (Provide the operation manual of the directional antenna).
- It has a low-noise signal amplification function and provides signal enhancement.
- The antenna can be connected to the receiver or antenna distribution system using any 50 Ω low-loss co-axial cable.
- It can be used in receivers and antenna distribution systems with antenna power supply function.
- Antenna frequency range : 450 - 950MHz
- Amplifier frequency range: 450 - 950MHz
- Antenna gain : 0dB - 15dB (± 1.5 dB)
- Antenna impedance : 50 Ω
- Power supply : 8V, 40mA
- Output : OIP3 > 28dBm
- Connector port : BNC female connector

UHF WIRELESS MICROPHONE

CKW-5000



SPECIFICATION	Body Pack Transmitter
Frequency range	UHF 600-937MHz (region dependant)
Frequency oscillation mode	PLL synthesized
Modulation Type	FM
Frequency Stability	$\pm 0.005\%$
Transmission Power	10mW
Frequency Switch	IR Sync
Capsule Type	Condenser
Battery Power	DC 3V(2 x 1.5V AA)
Continuous using	>6 hours
Temperature Range	-10°C ~ +60°C

SPECIFICATION	RECEIVER
Frequency range	UHF 600-937MHz (region dependant)
Frequency oscillation mode	PLL synthesized
Frequency response	40Hz-17KHz ± 3 dB
Distortion	<0.5%
S/Noise Ratio	>98dB (A weighted)
Receiving sensitivity	5dBuV
Antenna	BNC type
Receiver power supply	DC 12V/500mA
Temperature Range	-10°C ~ +60°C

SPECIFICATION	Hand held Transmitter
Frequency range	UHF 600-937MHz (region dependant)
Frequency oscillation mode	PLL synthesized
Modulation Type	FM
Frequency Stability	$\pm 0.005\%$
Transmission Power	10mW
Frequency Switch	IR Sync
Capsule Type	Dynamic
Battery Power	3V(2 x 1.5V AA)
Continuous using	>6 hours
Temperature Range	-10°C ~ +60°C

CKW-6000

CKS Acoustics cordless microphone is a dynamic microphone with a UHF high band transmitter and a sensitive noise squelch receiver. Ideal for PA applications, stage and auditorium, seminar halls, places of worship and recreation centres.



FEATURES

UHF600 - 937MHz (region dependant)

HD LED display

Digital ID code, completely solve the frequency interference

Preset 100 selectable channels (each side)

IR sync downloading the frequency from receiver

Frequency locking function in receiver

SPECIFICATION	Body Pack Transmitter
Transmitter frequency range	UHF 600-937MHz (region dependant)
Frequency oscillation mode	PLL synthesized
Modulation Type	FM
Frequency Stability	$\pm 0.005\%$
Transmission Power	10mW
Frequency Switch	IR Sync
Capsule Type	Condenser
Battery Power	DC 3V(2 x 1.5V AA)
Continuous using	>6 hours
Temperature Range	-10°C ~ +60°C

SPECIFICATION	RECEIVER
Frequency range	UHF 600-937MHz (region dependant)
Frequency oscillation mode	PLL synthesized
Frequency response	40Hz-17KHz ± 3 dB
Distortion	<0.5%
S/N Ratio	>98dB (A weighted)
Receiving sensitivity	5dBuV
Antenna	BNC type
Receiver power supply	DC 12V/500mA
Temperature Range	-10°C ~ +60°C

SPECIFICATION	Hand Held Transmitter
Frequency range	UHF 600-937MHz (region dependant)
Frequency oscillation mode	PLL synthesized
Modulation Type	FM
Frequency Stability	$\pm 0.005\%$
Transmission Power	10mW
Frequency Switch	IR Sync
Capsule Type	Dynamic
Battery Power	DC 3V(2 x 1.5V AA)
Continuous using	>6 hours
Temperature Range	-10°C ~ +60°C

UHF WIRELESS MICROPHONE



www.cksacoustics.com

CKW-7000

CKS Acoustics cordless microphone is a dynamic microphone with a UHF high band transmitter and a sensitive noise squelch receiver. Ideal for PA applications, stage and auditorium, seminar halls, places of worship and recreation centres.



Fitted with rechargeable LITHIUM BATTERY

Features

Strong anti - interference system with UHF Band.
System has built - in ID code technology.
Receiver has 6.35mm and XLR output for different connection.

SPECIFICATION	CKW-7000
Frequency range	500MHz-900MHz
Modulation mode	Digital FM
Frequency response	50Hz-18KHz
S/N ratio	>90dB
THD	<0.5% @1KHz
Output level	200mV±5mV
Microphone element	Dynamic
Receiver power supply	12V/500mA

Accessories



WIRELESS MICROPHONE

WPS-1000/WPS-2000/WPS-3000/WPS-4000

This Wireless system has built-in digital chip. It is more reliable wireless system and easy to operate. The system is fit for home singing, school, meeting-room and outdoor performing.

WPS 1000



WPS 2000



WPS 3000



WPS 4000



FEATURES

- Strong anti-interference system with UHF band.
- Transmitter has adjustable frequency function for more system using at the same time.
- 6.35mm audio plug for mini-receiver and easy to use.
- Receiver has auto-lock frequency function.
- Recharging and overload protecting for battery on receiver.

SPECIFICATION	
Frequency range	600MHz-700MHz
Modulation mode	Digital FM
Frequency response	50Hz-18KHz
THD	≤0.5% @ 1KHz
S/N Ratio	>90dB
Output level	200mV ± 5mV
Microphone element	Dynamic / Condenser
Receiver battery	3.7V / 18650 Li-ion

AUDIO MIXERS



www.cksacoustics.com

CKS ACOUSTICS Professional Audio Mixers enable effortless management of multi-microphone installations under the most demanding conditions. It provides small, portable units for field use and large table top units for large music programmes.



AUDIO MIXING CONSOLE

BMS-702 / BMS-402

FEATURES

- 7 Line Channel / 4 Line Channel
- 3 Band EQ
- 1 Stereo Group Buses
- 2/4 Mic
- 16 DSP Effect
- 1 Aux Send
- 18W/25W AC power consumption
- Dimension - 240mm x 207mm x 37mm
- Bluetooth Play
- Digital display Mp3 (U-disk Mp3 input, Mp3 with REC)
- +48V phantom power
- Karaoke Delay function
- Dual 7 Band EQ
- Dual 6 Band level display main output
- REC, Headphone monitor output



BMS-702



BMS-402

CKM-PLUTO 5 / CKM-MERCURY 6



CKM-PLUTO 5

- 5 Balanced mic input
- 1 Stereo input
- Switchable phantom power
- 3 band EQ
- Pan for 2 stereo out
- Built-in reverb control
- 2/5 Level display output
- Recording, headphone output microphone/line channels
- To accept a variety of balanced or unbalanced mic signals
- can change the delay time



CKM-MERCURY 6

- 6 Mic input
- There is mute function in each channel
- Equipped with PFL in each channel
- Left, Right main output, Effect output
- 16 DSP effects
- Separately fader control Mp3 volume
- 48V phantom power supply
- 7 bands EQ in main output
- Mp3 player with recording function and Bluetooth
- With monitor control

AUDIO MIXING CONSOLE



www.cksacoustics.com

PLANET M



FEATURES

- 4 balance microphone input
- Switchable phantom
- Balance in, balance out
- Gain, PAN
- 4 band EQ
- 24bit-48KHz, 99DSP digital effect
- Main mix in all fadder
- 6 inputs



SPECIFICATION	PLANET M
Input sensitivity	Mic : 60dB
	Line : 20dB
	Effect : -20dB
Output voltage	1.4V
DSP	99 effects
S / N Ratio	>85dB
THD	0.03%
Phantom power	+48V

AUDIO MIXING CONSOLE CFX SERIES

CFX-2022 XU / CFX-1622 XU / CFX-1222 XU CFX-1022 XU / CFX-8022 XU / CFX-6022 XU

FEATURES

- Dual 7 band EQ
- Rotary control knobs per channel
- 24 bit DSP effect processing
- 2 sub group out, 2 main mix out
- 36 effect modes, power-off memory, LCD display, easy to operate.
- The two groups are equipped with independent outputs to make the connection more flexible
- Built in 36 DSP effects. It is comparable with the popular X5 effect device in the market
- Single +48V power switch
- Mp3 large screen player, high quality dual display
- High quality USB music player with Bluetooth connection
- 2 auxiliary transmitters for easy expansion of equipment
- 60mm long life high resolution Fader
- External lossless power supply to minimize the background noise
- Global phantom power
- 48KHz sampling rate
- Standard double 12 segment level meter



CFX-2022 XU



CFX-1622 XU



CFX-1222 XU



CFX-8022 XU



CFX-6022 XU

SPECIFICATION	CFX-2022 XU	CFX-1622 XU	CFX-1222 XU	CFX-1022 XU	CFX-8022 XU	CFX-6022 XU
Inputs	16 Mic/Line +2 Stereo	12 Mic/Line +2 Stereo	8 Mic/Line +2 Stereo	6 Mic/Line +2 Stereo	4 Mic/Line +2 Stereo	2 Mic/Line +2 Stereo
Nominal gain (Mic/Line/Stereo line)	60dB					
Max gain (Mic/Line/Stereo line)	80dB					
Input levels sensitivity	20Hz - 20KHz					
Input impedance	Mic Input: $\geq 1K\Omega$ / Line Input $\geq 10K\Omega$					
Mic / Line (Gain Min / Gain Max)	Mic (+10 to +60dB) / Line : (-10 to +40dB)					
Main O/P level (Nominal/Max)	Balanced XLR socket, Unbalanced 1/4 socket					
Main O/P impedance	About 240 Ω for balanced type and 120 Ω for unbalanced type					
Frequency response	20Hz~20KHz (+1, -3dB)					
Total harmonic distortion	$\leq 0.01\%$ (+4dB, 1KHz)					
Signal to noise ratio	$\geq 113dB$					
Equalization (Mic/Stereo line)	HF: 12KHz $\pm 15dB$, MF: 5KHz $\pm 15dB$, LF: 80Hz $\pm 15dB$					
Effect	36 effects 24-bit DSP, 48KHz					
Phantom supply	48VDC					
Power supply	AC 100~120V/200~240V, 50/60Hz					
Dimension (W x D x H)mm	609 x 380 x 80	500 x 380 x 80	397 x 380 x 80	342 x 380 x 80	310 x 380 x 80	260 x 380 x 80
Net weight (Kgs)	8.6	7.5	6.35	5.75	5.2	4.6

ACTIVE CROSSOVER



www.cksacoustics.com

DRIVE RACK CDX-260



CAX-234XL



CAX-234XS



ANALOG ACTIVE CROSSOVER CAX-234XL / CAX-234XS

CKS Acoustics have also introduced range Analog Active Crossover for 3 way & 4 way widely use crossover is 234XL(black) 234XS(silver).

SPECIFICATION	ACTIVE CROSS-OVER CAX 234XL / CAX 234XS
Interface	XLR input & output
Type	Electronic balance / unbalance, with RF filter
Impedance	Balance > 50K Ω , unbalanced > 25K Ω
Max I/P level	> +24dBu balanced or unbalanced
Impedance	200 Ω balanced, unbalanced 100 Ω
Bandwidth	20Hz-20KHz, +0/-0.5dB
Frequency response	<3Hz-90KHz, +0/-3dB
Crosstalk between channels	<-80dB, 20Hz-20KHz
The stereo mode	MF/HF: 45-960Hz or 450-9.6KHz (x10)
Mono mode	Low frequency / intermediate frequency: 45-960Hz or 450-9.6KHz (x10)
MF / HF	45-960Hz or 450-9.6KHz (x10)
Filter type	Linkwitz-Riley 24dB/oct, a static variable

DRIVE CROSSOVER CDX-260

CKS Acoustics have made digital crossover with 2 in x 6 out with display limiter & crossover.

SPECIFICATION	DRIVE RACK CDX 260
Analog Inputs:	
Number of Inputs	2 Line inputs, 1 RTA Mic input
Connectors	2 female XLR line inputs, XLR RTA Mic input
Type	Electronically balanced / RF filtered
RTA Mic phantom voltage	+15VDC
RTA Mic EIN	<-110dBu, 22Hz-22KHz, 150 Ω
Analog Outputs:	
Number of Outputs	6 Line outputs
Connectors	Male XLR
Type	Electronically balanced, RF filtered
Impedance	120 Ω
D/A performance:	
Dynamic Range	112dB A-weighted, 110dB unweighted
Power Supply:	
Operating voltage	Domestic model: 100-120VAC, 50 / 60Hz EU model: 220-240VAC, 50 / 60Hz
Power requirements	25W
Physical:	
Weight	5.5lbs (2.5Kg),
Shipping weight	7lbs (3.18Kg)
Dimensions	1.75"H x 7.875"D x 19"W

CXD 4896 AF

CXD 4896 AF is a high-performance digital audio processor with 96KHz sampling rate. Audio processing is performed by 32bit ADC and 24bit DAC and high speed DSP processing. In addition to 16 band EQ for each input and output channel, there are also with HPF and LPF FIR filter, AUTO EQ, all-pass filter, port input, noise gate, gain control, input compressor, output limiter, scene preset, and delay for each channel. Powerful functions such as adjustable delay up to 200ms.



SPECIFICATION	CXD 4896 AF
AD converter	Using the 32 bit AK5574EN chip developed by Japan's AKM
DA converter	Using the 24 bit PCM1798 chip developed by American TI
Input / Output Impedance	Input: 10K Ω , Output: 50 Ω balance , Input: 20K Ω , Output: 100 Ω unbalance
THD + N	$\leq 0.002\%$ @4Bu, 20Hz-20KHz
Sampling rate	96K
Max. input / output level	+22dBu
Noise floor	-90dBu
Dynamic range	≥ 112 dB
Parameter equalizer	16PEQ
Equalization filter type	Peak, Notch, All pass, 2nd, High shelf and low shelf
High / Low pass filter	Butterworth slope : 6/12/18/24/30/36/42/48dB / Oct Bessel slope : 6/12/18/24/30/36/42/48dB / Oct Linkwitz-Relay : 12/24/36/48dB / Oct
Input / output delay	Each channel is adjustable from 0 to 200ms
System delay	≤ 3.15 ms
FIR performance	a. 48K mode, max tap is 992 b. 96K low delay mode, max tap is 992 c. 96K high performance mode, max tap is 960
AES / EBU Input & output	AES input : 2 channel AES output : 4 channel

PORTABLE PA SYSTEMS



www.cksacoustics.com

KARAKE
SING ALONG



CKS ACOUSTICS PORTABLE PA systems are attractive, ready to use packaged system with microphone, amplifier and speaker all supplied in one integrated package for indoor and outdoor.

Applications:

Music & Vocal performances, conference & lectures, presentations, religious discourses & gathering, touring PA, yoga / zumba / aerobic classes, political rally, class rooms, laughing club, karaoke singing, musical instruments etc.



CKS-1280TW

KARAOKE
SING ALONG



12" Class D

Power O/P : 80W RMS / 100W Max

**Battery : Lithium Ferro-Phosphate
12V/6A Rechargeable Battery**

Bluetooth Version-5 (SBC Codec)

Freq. Response : 50Hz to 20KHz @3dB

Rugged MDF cabinet coated with high quality weather proof acoustic paint.

Heavy duty rust free powder coated front grill.

Trolley & wheels for easy movement. (as per demand)

Both side handle for carrying.

In-built 12V/6Ah rechargeable battery for back-up.

External battery attachment for extra back-up.

MICROPHONES & INSTRUMENT

3 Wired & 2 Wireless microphones

Instrument Input

Digital echo control

Individual Bass/Mid/Treble control for microphones

DIGITAL MUSIC PLAYER & RECORDER

USB / SD / FM Radio / BLUETOOTH / RECORDING

11 keys for easy operation

Full function remote control

3.5mm jack & 2 pin RC socket for AUX/CD/DVD/DTH

Music volume / Bass / Treble for Music player

KARAOKE FACILITY WITH RECORDING

KARAOKE SING ALONG with either wired or wireless microphone with recording feature.



2-WAY PA ACTIVE SPEAKER SYSTEM CKS-1080DLX



www.cksacoustics.com

KARAOKE
SING ALONG



Power O/P : 80W RMS / 100W Max.

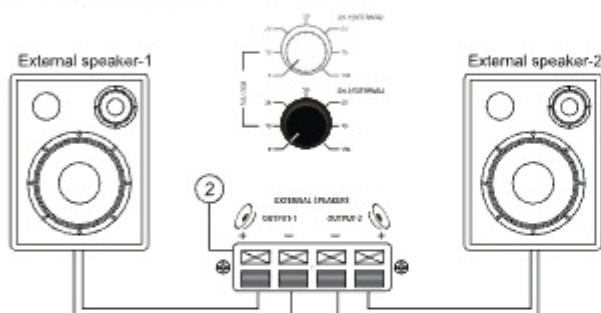
12V/6A Rechargeable Battery

Bluetooth Version-5 (SBC Codec)

Freq. Response : 50Hz to 20KHz @3dB

10" DUAL

External Speaker Connection



(External speakers are not a part of main unit.)



MICROPHONES & INSTRUMENT

3 Wired & 2 Wireless microphones
Instrument Input
Digital echo control
Individual Bass/Mid/Treble control for microphones

DIGITAL MUSIC PLAYER & RECORDER

USB / SD / FM Radio / Bluetooth / Recording
11 keys for easy operation
Full function remote control
2 pin RC socket for AUX/CD/DVD/DTH
Music volume/Bass/Treble for Music player

KARAOKE FACILITY WITH RECORDING

Karaoke Sing Along with either wired or wireless microphone with recording feature.

- Rugged MDF cabinet coated with high quality weather proof acoustic paint.
- Heavy duty rust free powder coated front grill.
- Trolley & wheels for easy movement. (as per demand).
- Both side handle for carrying.
- In-built 12V/6Ah rechargeable battery for back-up.
- External battery attachment for extra back-up.



KARAOKE
SING ALONG



Dual 8"

CKS-860BD has a built-in power amplifier with multiple inputs & 12V rechargeable Lithium Ferro Phosphate battery for use in a wide variety of PA and musical programs. This is an ideal equipment for small as well as medium gathering of around 150 people.

Power O/P : 60W RMS / 80W Max.

**Battery : Lithium Ferro-Phosphate
12V/6A Rechargeable Battery**

Bluetooth Version-5 (SBC Codec)

Freq. Response : 60Hz to 20KHz @3dB



SPECIFICATION	CKS-860BD
Power output	60W RMS, 80W Max
Input channels	3 x wired Mic., / 2 x wireless Mic. 1 x Aux (keyboard / guitar)
Tone controls	Bass : $\pm 10\text{dB}$ @ 100Hz, Treble : $\pm 10\text{dB}$ @ 10KHz
Frequency response	60-20,000Hz
Digital Player	Mp3 player with USB, SD card reader, AUX, FM Radio, Bluetooth & Recording
Digital Echo	For Mic-2, Mic-3 & wireless Mic.
Power supply (AC)	AC : 220~240VAC / 50-60Hz
Power supply (Battery)	DC : 12V/6Ah in-built rechargeable Battery DC : 12V car battery via ext. batt. socket

2 ZONE PA & INSTRUMENT AMPLIFIER CKS-40BT V2



www.cksacoustics.com



CKS-40BT V2 has a built-in power amplifier with multiple inputs & 12V re-chargeable lead acid battery for use in a wide variety of PA and musical programme. This is an ideal equipment for small gathering of around 50 people.

FEATURES

- 3 wired microphones inputs.
- Wireless microphones compatible.
- Digital echo effect.
- Line out to link another amplifier, or for recording on a computer.
- 8" full range speaker.
- High quality acoustic painted wooden cabinet.
- Digital music player with Bluetooth.
- Priority on Mic line input -1.
- With charging indicator.
- Guitar input.

SPECIFICATIONS:

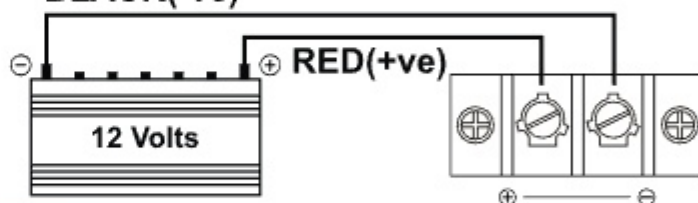
SPECIFICATION	CKS-40BT V2
Power output	40W RMS, 50W Max
Input channels	3 x wired Mic, / 1 x wireless Mic
Frequency response	50-20KHz @ 3dB
Tone controls	Bass : $\pm 10\text{dB}$ @ 100Hz, Treble : $\pm 10\text{dB}$ @ 10KHz
Digital Player	Mp3 player/USB/SD Card/Aux/FM/Bluetooth
Power supply(AC)	220-240VAC, 50/60Hz
Power supply(DC)	12V/4.5Ah in-built rechargeable Battery
AC power consumption	60W Max
Dimensions	W323 x H292 x D174mm
Weight	7.04Kg (Including in-built battery)

8"



External battery connection

BLACK(-ve)



FEATURES

- **Guitar Input:**
- CLEAN & OVERDRIVE volume
- Gain setting for 'overdrive'
- Tone control
- REVERB control for both 'CLEAN & OVERDRIVE'

SPECIFICATION:

SPECIFICATION	CGA-208BT
Power output	20W RMS
GUITAR INPUT	
Guitar volume	Clean & overdrive
Overdrive Gain	Yes
Tone control & Guitar Reverb	Yes
MICROPHONE	
Input channel	1 x wired Mic input
Controls	Volume & Echo controls
Power Supply	AC:220-240VAC / 50-60Hz
Dimensions	W330 x H352 x D177mm
Weight	7Kg

GUITAR & PA AMPLIFIER CGA-208BT



KARAOKE
SING ALONG



In an age where everything is digital, the analog offers something unique. It focuses on clear, unfiltered sound, timeless elegance-free from technological distractions.



- Compact, reliable and easy to assemble PA Lectern System with built-in 100W amplifier.
- Fitted with a 460mm (18") detachable Gooseneck condenser microphone.
- Reading light for the Podium top.
- Combo socket for connecting Dynamic Microphone either balanced or unbalanced.
- In-built two UHF Wireless Microphones (one Hand held & other Head worn).
- 3 band equalizer (low/mid/high) for dynamic & wireless microphones.
- Built in Echo effect for wired and wireless Microphones.
- Digital Multimedia Player with USB Playback, Aux, Bluetooth & Recording.
- Line out to connect external amplifier.

SPECIFICATION	
Power output	70W RMS / 100W Max
Input channels	1 Gooseneck Mic., 1 dynamic Mic., 1 handheld wireless Mic.
	1 Lapel wireless Mic, 1 Aux
Tone controls	High / Mid / Low for dynamic and wireless Mic,
	High / Low for Music
Frequency response	65Hz to 15,000Hz
Digital Player	Mp3 Recorder with USB and Bluetooth
Amplification topology	Class-D
Gooseneck Mic sensitivity	10mV
Feed-back suppression	Single band feed back suppression

DIGITAL PODIUM CKS DP-2

SPECIFICATION	CKS DP-2
Material	Wooden / Metallic
Mounting	Floor mounted with wheels
Type of chasis / Frame	Wooden / Metallic
Display	
Touch screen	21.5" or higher
Type	LED
Screen Resolution	1920 x 1080 pixel or more
Aspect Ratio	16 : 09
Stylus(With shipment)	Battery free pen operated
Color	16.7M or more color
Color depth	8 bits or more
Static contrast	1 : 1000 or more
Brightness	250-300 nits or more
Touch support	Available
Flicker free	Yes
Microphone Gooseneck Mic	1
Ergonomics Tilt	Up to 40° or more
Connectivity	HDMI-(1), VGA (1), 3.5mm
Screen Resolution	Audio In/Out - (1/1), USB 2.0 - (3)



FEATURES

- Fixed with a 460mm (18") detachable gooseneck condenser microphone.
- Digital multimedia player with USB playback, FM Radio, Aux in, Bluetooth & Recording.
- 3 pin socket compatible to Indian electrical configuration.
- Space for additional device.
- Drawer cabinet available.

AMPLIFIERS



www.cksacoustics.com

Rugged & reliable amplifiers designed to give sterling quality without compromise.

Applications:

Dj's & stadium fair, exhibitions, announcement & music, schools & colleges, shopping malls, cinemas, conference & meetings, stage shows, places of worship, railway stations, bus terminals.

DUAL CHANNEL POWER AMPLIFIER BOOSTER AMPLIFIER PRO PA AMPLIFIER TWO ZONE PA AMPLIFIER



DUAL CHANNEL POWER AMPLIFIER MPA SERIES

MPA-3600 / MPA-2600 / MPA-2000 / MPA-1600 / MPA-1200

CLASS - AB



MPA-3600



BACK VIEW

FEATURES:

- Two channel power amplifier designed for high end entertainment sound reinforcement.
- Rear mounted switch for level controls for each channel-MPA series sufficient & powerful output capacity at 8Ω, 4Ω and 2Ω.
- Two high speed cooling fans for adequate cooling & allow extended use.
- Balanced XLR and speakon outputs highly efficient, reliable & no interference for premium loud speaker system.
- 3U models features 1200W to 3600W per channel @ 4Ω.
- Advance protection circuit for protect from overload, over temperature, short circuit DC shock and frequency.
- Active crossover MPA 3600 & MPA 2600.

MPA-2600



MPA-2000



MPA-1600



MPA-1200



SPECIFICATION	MPA-3600	MPA-2600	MPA-2000	MPA-1600	MPA-1200
8Ω stereo power	2 x 750W	2 x 550W	2 x 400W	2 x 350W	2 x 250W
4Ω stereo power	2 x 1250W	2 x 950W	2 x 700W	2 x 550W	2 x 450W
2Ω stereo power	2 x 1800W	2 x 1300W	2 x 1000W	2 x 800W	2 x 600W
8Ω Bridge mono power	2400W	1900W	1400W	1100W	900W
4Ω Bridge mono power	3600W	2600W	2000W	1600W	1200W
Frequency response	20Hz~20KHz, ±0.1dB 1W/8Ω				
THD + N (8Ω 1KHz IN ¼ output)	<0.05%				
Signal to noise ratio (dB)	>95dB				
Damping factor (8Ω, 20Hz - 1KHz)	>800				
Input connectors (per channel)	3-pin XLR, electronically balanced				
Link connectors (per channel)	XLR, 3-pin male				
Input impedance	20KΩ balanced, 10KΩ for unbalanced				
Output topology	Class AB				
Dimension (mm)	W483 x H146 x D560	W483 x H146 x D460	W483 x H146 x D460	W483 x H146 x D460	W483 x H146 x D460
Weight	33Kg.	29Kg.	23Kg.	23Kg.	22.50Kg.

PROFESSIONAL POWER AMPLIFIER CDJ SERIES



www.cksacoustics.com

CDJ-12.0K / CDJ-6.0K / CDJ-4.0K

CLASS H

The CDJ series amplifiers are high-performance class-H professional power amplifier, built to deliver exceptional audio power and clarity for demanding live sound, DJ events and installed sound systems. With robust build quality, intelligent protection features, and outstanding sonic performance, it's the ideal choice for serious audio.



Advanced protection features

- Over heat and short-circuit protection
- DC fault protection
- Output relay zero current switching
- Soft start and limiter circuit
- Intelligent clip limiter for distortion-free performance



CDJ-12.0K



CDJ-6.0K



CDJ-4.0K

SPECIFICATION	CDJ 12.0K	CDJ 6.0K	CDJ 4.0K
Output power stereo RMS @ 8Ω	2 x 2000W	2 x 1350W	2 x 1000W
Output power stereo RMS @ 4Ω	2 x 3000W	2 x 2300W	2 x 1700W
Output power stereo RMS @ 2Ω	2 x 5000W	2 x 3000W	2 x 2700W
Bridge mode RMS @ 8Ω	4000W	2700W	2000W
Bridge mode RMS @ 4Ω	8000W	5400W	4000W
Frequency response	20Hz~20KHz±0.3dB	20Hz~20KHz±0.3dB	20Hz~20KHz±0.3dB
THD + N	<0.03% @ 8Ω 1KHz	<0.03% @ 8Ω 1KHz	<0.03% @ 8Ω 1KHz
S/N Ratio	>98dB	>95dB	>90dB
Damping factor	>300	>400	>400
Input sensitivity	0.775V / 1V / 1.4V	0.775V / 1V / 1.4V	0.775V / 1V / 1.4V
Input impedance	20KΩ (balanced), 10KΩ (unbalanced)	20KΩ (balanced), 10KΩ (unbalanced)	20KΩ (balanced), 10KΩ (unbalanced)
Weight	49.2Kg	45.2Kg	37.5Kg
Dimension (W x D x H)	780x590x203mm	710x600x203mm	660x590x203mm

CKD-27.6K / CKD-14.8K / CKD-10.8K

CLASS - D



FEATURES

- Frequency response : 10Hz - 20KHz / $\pm 0.35\text{dB}$
- THD + N(20Hz - 20KHz) : $\leq 0.5\%$ @8 Ω 1KHz
- S/N Rate (20Hz - 20KHz) : $> 102\text{dB}$
- Crosstalk : $> 70\text{dB}$
- Slew rate : 30V / mS
- Damping factor : $> 3000(8\Omega)$ 20Hz - 100Hz
- Input sensitivity : 0.775V, 1V, 1.4V, 2V
- Input impedance : 10K Ω balance / 20K Ω unbalance
- Input connectors : XLR active balanced pin 1-Gnd, pin 2-(+) pin 3-(-)
- Output connectors : 4 Neutrik, NL4 Sockets
- Operating voltage : PFC 90 - 270V



CKD-27.6K



CKD-14.8K



CKD-10.8K

SPECIFICATION	CKD-27.6K	CKD-14.8K	CKD-10.8K
Output power stereo RMS @ 8 Ω	4 x 2800W	4 x 1500W	4 x 1100W
Output power stereo RMS @ 4 Ω	4 x 4550W	4 x 2500W	4 x 1830W
Output power stereo RMS @ 2 Ω	4 x 6900W	4 x 3700W	4 x 2700W
Bridge mode RMS @ 16 Ω	2 x 5600W	2 x 3000W	2 x 2200W
Bridge mode RMS @ 8 Ω	2 x 9250W	2 x 4950W	2 x 3600W
Bridge mode RMS @ 4 Ω	2 x 11750W	2 x 6600W	2 x 5000W
Power consumption idle	$< 170\text{W}$	$< 130\text{W}$	$< 110\text{W}$
Power consumption Max	$< 10000\text{W}$	$< 5800\text{W}$	$< 4000\text{W}$
Voltage gain	47dB (0.775V : 150V)	43dB (0.775V : 110V)	41.7dB (0.775V : 94V)
Dimension (L x W x D)	500mm x 483mm x 45mm	483mm x 415mm x 45mm	483mm x 415mm x 45mm
Package (L x W x D)	655mm x 630mm x 130mm	610mm x 500mm x 100mm	610mm x 500mm x 100mm
Net weight	11.5Kg	11.2Kg	11.0Kg
Gross weight	15.5Kg	15.2Kg	15.0Kg

POWER AMPLIFIER TITAN SERIES



www.cksacoustics.com



Output Power Per Channel (100Hz, 0.1% THD, both channels driven)

LOAD	TITAN 6000	TITAN 8000	TITAN 10000
8 Ω	1800 W	2500 W	2000 W
4 Ω	3000 W	4000 W	3000 W
2 Ω	3200 W	3500 W	5000 W

Protection Systems

Short Circuit, Over Current, Overload, Bus Pumping, Soft Start
Auto-Ramp, Real Time Thermal Monitoring, Clip Monitoring
AC Mains Fault Fuse, Post Capacitor Rail Fuses, Speaker cutoff Relays.

With full function 3.5" Display



SPECIFICATION	CKW-7000
Display type	3.5" LCD full colour display with real time clip
	AC mains voltage, fans speed, signal monitoring
Input sensitivity	1.4V
Input Impedance	10k Ω
Distortion	0.1%
Frequency Response	20Hz – 15kHz
Damping Factor (8 Ω)	> 1000
Signal to Noise Ratio	100dB
Crosstalk	87dB
Output Topology	Class D
Operating Voltage Range	180V AC – 255V AC @ 50Hz/ 60Hz

CKB-701 / CKB-501

Rugged and reliable range of amplifiers designed for use in wide variety of PA and DJ performances. Compatible to various input sources like microphone, PA mixer, DJ mixer, CD / DVD player, multimedia player, cassette player, keyboard etc.

These amplifiers have 5-band graphic equalizer which enable precise and accurate tonal setting of the sound quality.

Amplifiers have built-in protection against over voltage in AC mains supply which is specially useful while operating on Gensets, also indicator LEDs for power, signal temperature overload and fault conditions have been provided.



CKB-701



CKB-501



BACK SIDE

CLASS AB

SPECIFICATION	CKB-701	CKB-501
Power supply	AC : 220-240, 50 / 60Hz	AC : 220-240, 50 / 60Hz
Power output	1000W RMS Max	650W RMS Max
	700W RMS @ 10% THD	500W RMS @ 10% THD
	650W RMS @ 5% THD	475W RMS @ 5% THD
	600W RMS @ 2% THD	450W RMS @ 2% THD
Input channel	Pre 200mV / Line 1V	Pre 200mV / Line 1V
	1 x Mix / 1 x Aux / 1 x RCA in	1 x Mix / 1 x Aux / 1 x RCA in
Digital player	USB / FM / BLUETOOTH	USB / FM / BLUETOOTH
Frequency response	50Hz-18000Hz ± 3 dB	50Hz-18000Hz ± 3 dB
Tone control	Low : 100Hz ± 10 dB	Low : 100Hz ± 10 dB
	Low/Mid : 330Hz ± 10 dB	Low/Mid : 330Hz ± 10 dB
	Mid : 1KHz ± 10 dB	Mid : 1KHz ± 10 dB
	High/Mid : 3.3KHz ± 10 dB	High/Mid : 3.3KHz ± 10 dB
	High : 10KHz ± 10 dB	High : 10KHz ± 10 dB
Cooling	DC fan (120mm x 120mm)	DC fan (120mm x 120mm)
Speaker output	2 Ω , 4 Ω , 8 Ω , 70V, 100V Line	2 Ω , 4 Ω , 8 Ω , 70V, 100V Line
Dimension (mm)	W 483 x H 146 x D 410	W 483 x H 146 x D 410
Weight	24Kg	23Kg

2 ZONE PA AMPLIFIERS CTZ SERIES

CTZ-7000 / CTZ-5000



CTZ-7000



CTZ-5000

CKS ACOUSTICS CTZ-7000 & CTZ-5000 is rugged, reliable, cost-effective 700W and 500W 2-zone amplifier. It is ideal for multi-speaker installations where a user needs to separately set power levels for two separate areas such as indoors and outdoors.

SPECIFICATION	CTZ-7000	CTZ-5000
Power output (for each channel)	500W+500WRMS Max.	300W+300WRMS Max.
	350W+350WRMS @ 10% THD	250W+250WRMS @ 10% THD
	300W+300W RMS @ 5% THD	200W+200W RMS @ 5% THD
for each zone	280W+280W RMS @ 2% THD	175W+175W RMS @ 2% THD
Output regulation	<2dB, no load to full load @1KHz	
Input channel	Mic/Aux 6 x Mic 0.6mV / 4.7K Ω , 2 x Aux 100mV / 470K Ω	
	Stereo L/R 200mV / 100K Ω , Line L/R 1V/ 50K Ω	
Frequency response	50Hz-15KHz ± 3 dB for each zone	
Signal to noise ratio	60dB	
Tone control	Bass : ± 10 dB at 100Hz, Treble : ± 10 dB at 10KHz, for each zone	
Outputs	Pre-amp 200mV / 600 Ω , Line 1V / 1K Ω	
Speaker output	4 Ω , 8 Ω , 70V, 100V Line for each zone	
Digital player	Mp3 Player with USB SD card and Blue-tooth	
Power supply	AC : 220-240, 50 / 60Hz,	
	DC : 36V (3 x 12V car battery)	DC : 24V (2 x 12V car battery)
Power consumption	AC : 1100VA, DC : 13A	AC : 700VA, DC : 9A
Dimension (mm)	W 512 x H 185 x D 475	W 512 x H 180 x D 390
Weight	40Kg	24Kg

INSTALLTION AMPLIFIER CRG-5010



www.cksacoustics.com

Specially designed for Cafe-Restaurant-Gym

CRG-5010 is High power 10 channel amplifier for Gymnasiums, Fine Dining Restaurants, Cafe's. Also useful for Home Entertainment. It delivers 500W RMS (50Watts x 10).

Offering you not only bluetooth connectivity for your Smart-phone or Tablet, it can also be used with three microphones (with echo, frequency controls and Mic volume controls), and has the ability to playback from USB in addition, there is a built in FM Radio Tuner and RCA inputs for connecting a CD player or other external device.



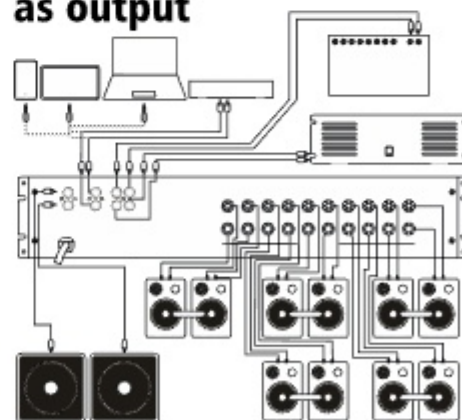
CLASS D



BACK SIDE

SPECIFICATION	CRG-5010 (DIGITAL PLAYER)
Digital player	USB / FM Tuner/ Blue tooth / AUX
Tone controls	5-Band graphic equalizer
Music Volume	Yes
Recording	Yes
Keys	9 Keys
Remote control	Yes
SPECIFICATION	CRG-5010 (MICROPHONES)
Input Channels	3 x Microphones (Balanced / Unbalanced)
Tone controls	Bass / Mid / Treble @ $\pm 10\text{dB}$
Echo controls	Depth / Delay / Feedback controls
Volume controls	3 individual volume controls with echo ON/OFF switch for 3 Mic
Phantom power	Yes (Mic-3)
SPECIFICATION	CRG-5010 (OUTPUT)
Power output	500RMS / 50W x 10 @ 4 Ω class-D topology
Output channels	10 x mono / 5 x stereo
Frequency Response	40Hz-20KHz / 3dB
Master controls	10 individual master controls with mute switches
Sub out	Yes
Line in / out	Yes
Power supply	AC : 220-240 / 50 - 60Hz
Dimension (mm)	W323 x H292 x D174
Weight	7.04Kg

Connect device as output



CKA-500 / CKA-250 / CKA-180

CKA series is rugged and highly reliable amplifier. It is designed to give high power clean sound and trouble free operation under extreme climate conditions. Compatible for all type of public addressing, live concerts, stage shows, indoor & outdoor programme, religious programme etc.



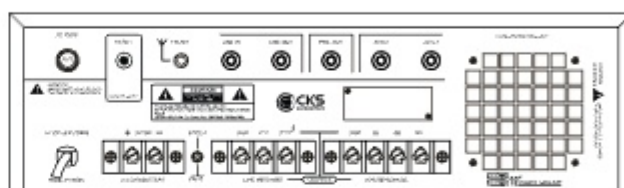
CKA-500



CKA-250



CKA-180



Back side

FEATURES

- 6 Mic & 2 aux inputs.
- Mic-1 & Mic-2 equipped with digital echo.
- Mic priority for Mic-6.
- Built-in Mp3 player with USB, SD Card reader, bluetooth and recording facility.
- Pre-out & Line-out for connecting to a booster amplifier and for recording.
- Line-in for connecting the output from any external mixer or permitting CKA-250 / CKA-180 to be used as booster power amplifier.
- Resettable circuit breaker for protection against overload and short circuit.
- Instant transfer to DC power (car battery) if AC power fails.
- Box speaker / Driver unit selector switch, bass boost defeated at driver unit position for safer operation of driver units.

SPECIFICATION	CKA-500	CKA-250	CKA-180
Power output	650W Max, 500W RMS @ 10% THD	300W Max, 250W RMS @ 10% THD	240W Max, 180W RMS @ 10% THD
	400W RMS, 5% THD,	220W RMS @ 5% THD	1600W RMS @ 5% THD
	360W RMS 1%THD	200W RMS @ 2% THD	140W RMS @ 2% THD
Output regulation	<-1dB No Load To Full Load @ 1KHz	<2dB No Load To Full Load @ 1KHz	
Input channels	6 x Mic 0.7mV/4.7kΩ, 2 x Aux 100mV/470kΩ, 1 x Line 1V/50kΩ		
Frequency response	20Hz~20KHz±1dB	50Hz~15KHz±3dB	
Signal to Noise ratio	80dB	60dB	
Tone controls	Bass: ±10dB @ 100Hz, Mid: ±10dB @ 1KHz, Treble: ±10dB @ 10KHz		
Output	Preamp 200mV/600Ω. Line1V/1kΩ		
Speaker output	2Ω, 4Ω, 8Ω, 70V, 100V Line out		
Digital player	Mp3 player with USB, FM Radio, BLUETOOTH and RECORDING		
Power supply	AC : 220-240V 50/60Hz DC : 24V(2 x Car Battery)		
Power consumption	AC: 650VA, DC: 6A AC	AC: 460VA, DC: 6A	AC: 320VA, DC: 4A
Digital echo	Delay Time: 60-300ms		
Dimension (W x D x H)	W558 x H228 x D544mm	W558 x H228 x D444mm	W483 x H146 x D444mm
Weight	24.0Kg	16.0Kg	13.5Kg

PA MIXER AMPLIFIER CKA SERIES



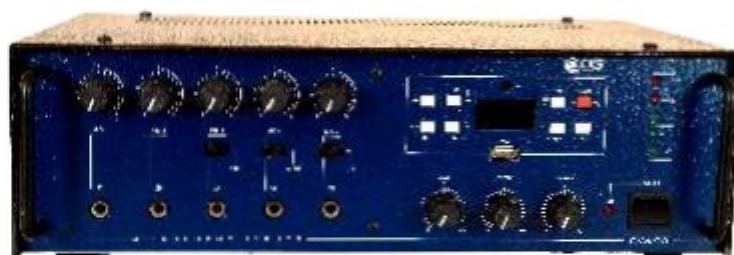
www.cksacoustics.com

CKA-120 / CKA-90 / CKA-65

- Pre-amplifier and line output for connecting to a booster amplifier and for recording the programme.
- Bass and treble controls which enable precise and accurate total setting of the sound quality.
- Dual power operation, AC mains & 12VDC provision of automatic change over from AC to 12V battery if AC power fails.
- Built-in digital music player with bluetooth & recording.



CKA-65



CKA-90



Back Side



CKA-120

SPECIFICATION	CKA-120	CKA-90	CKA-65
Power output	150W Max, 120W RMS @ 10% THD	160W Max, 90W RMS @ 10% THD	80W Max, 65W RMS @ 10% THD
Input channels	5 x Mic 1mV/4.7K Ω 2 x Aux 70mV/100K Ω	5 x Mic 1mV/4.7K Ω 2 x Aux 70mV/100K Ω	3 x Mic 1mV/4.7K Ω 1 x Aux 100mV/470K Ω
Frequency response	50Hz~15KHz \pm 2dB	50Hz~15KHz \pm 2dB	50Hz~15KHz \pm 2dB
Tone controls	Bass: \pm 10dB @ 100Hz, Treble: \pm 10dB @ 10KHz		
Speaker output	4 Ω , 8 Ω , 16 Ω , 100V Line	4 Ω , 8 Ω , 16 Ω , 100V Line	4 Ω , 8 Ω , 16 Ω , 100V Line
Output	Preamp 200mV/600 Ω , Line 1V/1k Ω		
Digital player	Mp3 player with USB, SD card, bluetooth and Recording		
Power supply	AC : 220-240V 50/60Hz, DC : 12V (1 x 12V car battery)		
Dimension (W x D x H)	W390 x H130 x D297mm	W360 x H130 x D300mm	W275 x H115 x D255mm
Weight	9.3Kg	8.3Kg	4.6Kg

MANUAL AUTO CUT STABILIZER 3KVA / 5KVA

CKS ACOUSTICS Stabilizer (3KVA, 5KVA) is a high-performance device designed to maintain a constant voltage level, preventing over-voltage or under-voltage conditions. It ensures the protection of your sensitive equipment, extending their life-span and enhancing operational efficiency.

SPECIALY DESIGN FOR DJ / PA SYSTEM



SPECIFICATION	Stabilizer
Wide working range	130VAC - 290VAC
Efficiency	> 99%
Over load	120% for 60 sec.
Harmonic distortion	Nil, sine wave O/P (as I/P)
Capacity	3KVA to 15KVA Higher capacity is available on demand
Voltage control	Micro controller based circuit for voltage control
Pre buzzer alarm	Audible alarm -10V before set cut off voltage to do reduction of output switch, output cut-off
Body	Tank power coated body
Transformer	100% pure copper transformer
Protection	Auto cut-off adjust set O/P voltage, Auto reset O/P available at 1V below set voltage



MANUAL AUTO CUT STABILIZER 7.5KVA / 10KVA / 15KVA

CKS ACOUSTICS Stabilizer (7.5KVA,10KVA,15KVA) is a high-performance device designed to maintain a constant voltage level, preventing over-voltage or under-voltage conditions. It ensures the protection of your sensitive equipment, extending their life-span and enhancing operational efficiency.

FEATURES

- **Reliable Protection** : Provides robust safeguarding against power fluctuations, ensuring uninterrupted performance and extended equipment life.
- **Advanced Technology** : Features a state-of-the-art microprocessor-controlled system for precise voltage regulation, delivering consistent and stable power to sensitive devices.
- **Cost-Effective Solution** : Reduces expenses on repairs and replacements by maintaining optimal power conditions, saving you money in the long run.
- **Easy Installation & Maintenance** : Designed for hassle-free setup with minimal upkeep, making it convenient for both residential and commercial use.

SPECIFICATION	Stabilizer
Input	140V - 280V / As required (optional)
Output	Settable voltage with on load tap change switch -230V
Metering	Digital display : Input volts / Output volts
Frequency	50Hz , same as input
Efficiency	> 99%
Harmonic distortion	Nil, sine wave output (as input)
Capacity	5KVA to 15KVA, Higher capacity available on demand
Overload	120% for 60 sec.
Protection	Auto cut-off adjust set O/P voltage, Auto reset O/P available at 1V below set voltage
Pre buzzer alarm	Audible alarm -5V before set cut-off voltage to do reduction of output switch, avoids output cut-off

SPEAKER CABINET



www.cksacoustics.com

CKS Acoustics offers a comprehensive range of speaker cabinets engineered for superior sound performance across varied applications. Our ceiling speakers provide uniform, high-clarity audio with a discreet finish, while wall-mount speakers deliver powerful, focused sound in a compact and stylish design. For outdoor environments, rock speakers blend naturally into landscapes while producing rich, immersive audio. Complementing these, metal column speakers ensure excellent speech intelligibility and wide sound dispersion, making them ideal for public address systems, auditoriums, and large venues.



CKS-0606B & W / CKS-0505B & W /CKS-0306B & W



CKS-0606B/W



CKA-0505B/W



CKS-0306B/W



FEATURES:

High quality sound : With 6W of power, this in-ceiling speaker delivers crisp, clear sound that is sure to impress.

The speaker designed for easy installation.

The speaker's discreet design allow it to blend seamlessly into any room or decor, making it a great choice for both residential and commercial settings.

The speaker is suitable for use in homes, showrooms, offices, hospitals and more making it a versatile choice for a wide range of applications.

This speaker is compact and unobtrusive, making it a great choice for those who want high-quality audio without sacrificing space.

SPECIFICATION	CKS 0606W / CKS-0606B	CKS 0505W	CKS 0306W
Speaker type	Ceiling mount	Ceiling mount	Ceiling mount
Speaker unit	6" woofer	5" woofer	3" woofer
Rated power	6W RMS	6W RMS	6W RMS
Frequency response	150Hz-15KHz	85Hz-20KHz	85Hz-20KHz
Input voltage (Max.)	100V	100V	100V
Sensitivity	92dB- (1W / 1M)	89dB- (1W / 1M)	89dB- (1W / 1M)
Material type	Metal	Metal	Metal
Net weight	0.935	0.780	0.780
Colour	White / Black	White	White/Black

CCS-40W/CCS-40B/CCS-20W/CCS-20B



FEATURES:

High quality sound With 40W/20W of power, this in-ceiling speaker delivers crisp, clear sound that is sure to impress.

The speaker designed for easy installation.

The speaker's discreet design allow it to blend seamlessly into any room or decor, making it a great choice for both residential and commercial settings.

The speaker is suitable for use in homes, showrooms, offices, hospitals and more making it a versatile choice for a wide range of applications.

This speaker is compact and unobtrusive, making it a great choice for those who want high-quality audio without sacrificing space.

SPECIFICATION	CCS-40B/W	CCS-20B/W
Speaker type	Ceiling mount	Ceiling mount
Speaker unit	5.25" Woofer + 1.5" Tweeter	5.25" Woofer + 1.5" Tweeter
Rated power	40W RMS	20W RMS
Frequency response	120Hz-18KHz	120Hz-18KHz
Input voltage (Max)	70V / 100V	70V / 100V
Sensitivity	88dB±3dB	88dB±3dB
Material type	Metal + ABS	Metal + ABS
Net weight	0.935	0.780
Colour	White / Black	White / Black

PA COLUMN SPEAKER CKS-30T /CKS-15T



www.cksacoustics.com

Available in four colours : Grey / Blue / Red / Orange



FEATURES:

- For indoor & outdoor applications such as hall, auditorium, airport lounges.
- For use under roof eaves. Foam layer to protect speakers from
- Array of speakers radiate forward sound beam for wider audience coverage.
- Supply with mounting clamps and hardware.
- Column speaker in metal cabinet powder coated finish.
- Available in 70/100V line matching a transformer version and low impedance version.

Best For
Educational Institute
Worship Places
Home theatre
Health Club
Garden
Café
Mall



SPECIFICATION	CKS-15T	CKS-30T
Max power output	15W	30W
RMS	10W	20W
Frequency response	150Hz-12KHz	150Hz-12KHz
Input voltage	70V / 100V	70V / 100V
Taps watt	4Ω / 70 / 100V	4Ω / 70 / 100V
Component	1 x (6" x 4")	2 x (6" x 4")

ROCK SPEAKER CRS-602 / CRS-402

AVAILABLE IN 3 COLOURS:
FOREST GREEN / GRAPHITE GREY / GREAT KENIYAN

FEATURES:

- **Durability and weather resistance** : They are built to withstand harsh weather conditions like rain, snow, heat and UV rays, ensuring long-lasting performance.
- **Sound quality** : They provide a balanced and clear sound, often with omnidirectional coverage for a better listening experience in open spaces.
- **Discreet Design** : Their rock-like appearance allows them to blend in with the surroundings, minimizing visual impact on the landscape.
- **Versatility** : Rock speakers are suitable for both personal enjoyment and professional applications. Such as enhancing backyards entertainment, adding ambiance to gardens, or providing audio in public spaces like resorts or theme park.



Forest Green



Graphite Grey



Great Kenyan

MODEL NAME	CRS-602	CRS-402
Speaker type	Outdoor Rock speaker	Outdoor Rock speaker
Driver unit	5.25" Woofer + 1.5" Tweeter	5.25" Woofer + 1.5" Tweeter
Power output	60W RMS	40W RMS
Frequency response	60Hz - 18KHz	60Hz - 18KHz
Input voltage (Max)	70V / 100V Line input	70V / 100V Line input
Sensitivity	88dB ± 3dB	88dB ± 3dB
Impedance	8Ω	8Ω
Colour	Forest Green / Great Kenyan / Graphite grey	

WALL MOUNT SPEAKER CKW SERIES

CKW-880B / CKW-660B / CKW-550B / CKW-420B
CKW-880W / CKW-660W / CKW-550W / CKW-420W



FEATURES:

- The full-range wall mount speaker series is designed for professional music and speech reproduction in an impressive array of background and foreground audio applications.
- The classic and robust design suits a variety of commercial interiors. Ideal for single-source audio in smaller venues, or straight-forward integration into arrays.
- Compact and classic full-range, all-purpose wall mount speaker, exceptional reproduction of music and speech for outdoor commercial background and foreground applications.
- 2 Way system, with integrated passive crossover network and tweeter, overload protection.
- 4", 5", 6" & 8" high output woofer and 1" voice coil compression driver with 130° horn, brilliant audio with wide controlled coverage pattern for vertical or horizontal mounting.
- 50W, 60W & 80W RMS running to 100W maximum efficient high power output for clear and powerful sound.
- Simple and flexible installation, U bracket and M6 screw knob with integrated recessed carry handles.

SPECIFICATION	CKW-880B/W	CKW-660B/W	CKW-550B/W	CKW-420B/W
Woofer	8"	6.5"	5.25"	4"
Impedance	8Ω	8Ω	8Ω	8Ω
Rated power	20W /40W/ 80W / 8Ω	10W /20W/ 40W / 8Ω	7.5W /15W/ 30W / 8Ω	5W /10W/ 20W / 8Ω
Power handling	80W	60W	50W	20W
Frequency response	40Hz-20KHz	60Hz-20KHz	75Hz-20KHz	90Hz-20KHz
Sensitivity (1W / 1m)	92dB	90dB	90dB	88dB
Material	Metal grill & bracket	Metal grill & bracket	Metal grill & bracket	Metal grill & bracket
Product size	φ435mm x 300mm x 265mm	121mm x 300mm x 190mm	170mm x 250mm x 150mm	145mm x 210mm x 130mm
Colour	Black or White	Black or White	Black or White	Black or White

CPS-580 / CPS-540

FEATURES

Bi Directional speaker
"U" type bracket for easy installation
Rated output power : 80W
Speaker diameter : 5.25"
Input voltage : 100V
Frequency response : 250Hz to 8000z
Sensitivity : 93dB
Direction : Bi-directional with IP-55 rating
Rated power O/P : 80W(CPS-580),
40W(CPS-540)

BI DIRECTIONAL SPEAKER



SPEAKER CABINET CIS SERIES



www.cksacoustics.com

CIS-802 / CIS-1002 / CIS-1202

CKS Acoustics CIS series CIS-802 / CIS-1002 / CIS-1202 are a compact professional speakers perfectly suitable for various portable and installed applications. It is lightweight and compact, easy to set up and operate and complemented by its distinct feature of being used as a PA system or a stage monitor. The CIS-1202 / CIS-1002 / CIS-802 are specially designed for applications including house of worship, banquet halls, nightclubs, auditoriums, ballrooms and many other venues.

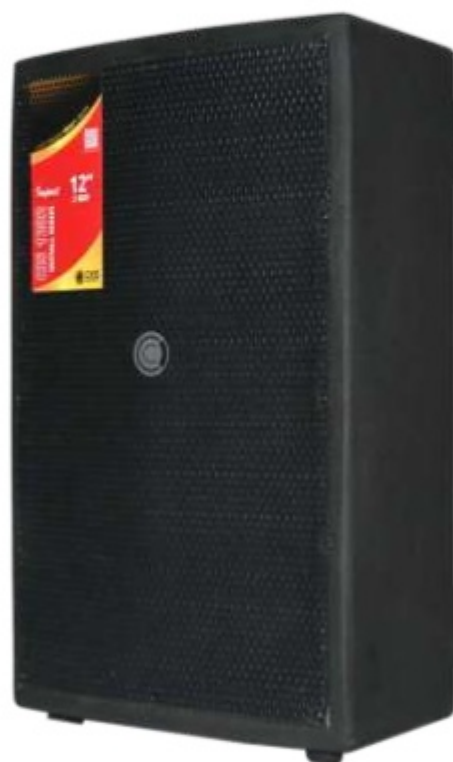
Light Weight Heavy Duty



CIS-802



CIS-1002



CIS-1202

SPECIFICATION	CIS-802	CIS-1002	CIS-1202
Speaker type	2 Way	2 Way	2 Way
Speaker size	8"	10"	12"
Product dimension	255 x 250 x 410mm (L x W x H)	300 x 335 x 620mm (L x W x H)	345 x 390 x 634mm (L x W x H)
Model number	CIS 802	CIS 1002	CIS 1202
Item weight	11.6Kg	19.5Kg	24.0Kg
Colour	Black	Black	Black
Material	Wood	Wood	Wood
Wattage	300W*	300W*	550W*
Recommended uses for product	Banquet halls, nightclubs, auditoriums, ballrooms & many other venues		
Grill	1.6mm perforated weatherised MS		

SRX-715

FEATURES:

- Professional design
- Effective dynamic range
- Class leading output
- Acoustically superior- Russian Birch plywood enclosure
- Smoother frequency response
- Deep room-filling Lows
- Advanced Network topology

SPECIFICATION	SRX-715 320RC	SRX-715 520RC	SRX-715 900RC
Power output	320W	520W	900W
Frequency response	36Hz-20KHz	36Hz-20KHz	36Hz-20KHz
Max. rated SPL	133dB	133dB	133dB
Nominal impedance	8Ω	8Ω	8Ω
SPL @ 1W / 1m	102dB	102dB	102dB
Speaker	CK 15 450E - 2Nos.	CK 15 450 BMB - 2Nos.	CK 15 800 RMB - 2Nos.
HF	CK 1 450	CK 1 450	CK 2 750
Network	CKX 450	CKX 750	CKX 750



SRX-715

SRX-722

FEATURES:

- Professional design
- Effective dynamic range
- Class leading output
- Acoustically superior- Russian Birch plywood enclosure
- Smoother frequency response
- Deep room-filling Lows
- Advanced Network topology

SPECIFICATION	SRX-722 480RC	SRX-722 580RC	SRX-722 900RC
Power output	480W	580W	900W
Frequency response	36Hz-20KHz	36Hz-20KHz	36Hz-20KHz
Max rated SPL	133dB	133dB	133dB
Nominal impedance	4Ω	4Ω	4Ω
SPL @ 1W / 1m	102dB	102dB	102dB
Speaker	CK 12 200 RMB - 2Nos	CK 12 250 BMB - 2Nos	CK 12 450 RMB - 2Nos
HF	CK 1 450	CK 1 450	CK 2 750
Network	CKX 450	CKX 450	CKX 750



SRX-722

SPEAKER CABINET



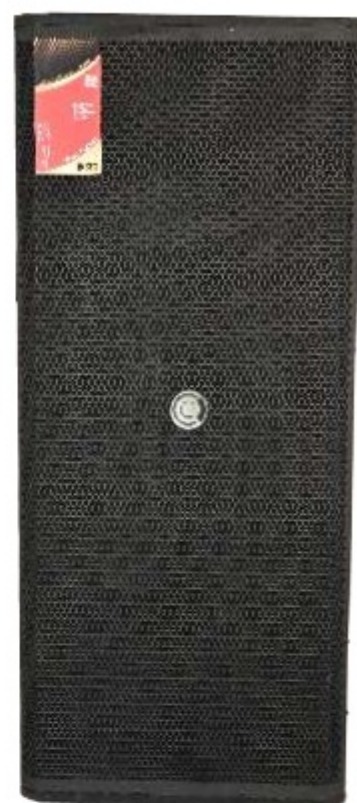
www.cksacoustics.com

SRX-725

FEATURES:

- Professional design
- Effective dynamic range
- Class leading output
- Acoustically superior- Russian Birch plywood enclosure
- Smoother frequency response
- Deep room-filling Lows
- Advanced network topology

SPECIFICATION	SRX 725 - 1000 RC	SRX 725 - 1700 RC
Power output	1000W	1700W
Frequency response	36Hz-20KHz	36Hz-20KHz
Max rated SPL	133dB	133dB
Nominal impedance	4Ω	4Ω
SPL @ 1W / 1m	102dB	102dB
Speaker	CK 15 450 BMB - 2Nos	CK 15 800 RMB - 2Nos
HF	CK 2 1000	CK 2 1000
Network	CKX 750	CKX 750



SRX-725

CKS-215

FEATURES:

- Professional design
- Effective dynamic range
- Class leading output
- Acoustically superior- Russian Birch plywood enclosure
- Smoother frequency response
- Deep room-filling Lows
- Advanced Network topology

SPECIFICATION	CKS-215 - 580RC	CKS-215 - 1000RC
Power output	580W	1000W
Frequency response	36Hz-20KHz	36Hz-20KHz
Max rated SPL	133dB*	133dB*
Nominal impedance	4Ω	4Ω
SPL @ 1W / 1m	102dB	102dB
Speaker	CK 15 450 E - 2Nos	CK 15 450 BMB - 2Nos
HF	CK 1 450	CK 2 750
Network	CKX 450	CKX 750



CKS-215

CSP-1000DLX

FEATURES:

- Professional design
- Effective dynamic range
- Class leading output
- Acoustically superior- Russian Birch plywood enclosure
- Smoother frequency response
- Deep room-filling Lows
- Advanced network topology

SPECIFICATION	CSP 1000E - RC	CSP 1000DLX RC
Power output	1000W	1700W
Frequency response	36Hz-20KHz	36Hz-20KHz
Max rated SPL	133dB	133dB
Nominal impedance	4Ω	4Ω
SPL @ 1W / 1m	102dB	102dB
Speaker	CK 15 450E - 2Nos	CK 15 450 BMB - 2Nos
HF	CK 1 450	CK 2 850
Network	CKX 450	CKX 750



CSP-1000DLX

CTB-118 - 1200RC / CTB-118 - 2000RC

OVERVIEW

High-output passive sub-woofer, CTB-118 is advised for mobile speaker sets and fixed installations alike due to high performance, low weight and compact dimensions. CTB-118 features specially designed 18" long-excursion woofer for extended low-frequency operation and superior reliability.

FEATURES:

- Professional low-pass design
- Class leading output
- Deep room-filling lows
- Wide range response
- Perfect clarity
- Highest percussion bells
- Side handle for easy portability

SPECIFICATION	CTB-118 -1200RC	CTB-118 -2000RC
Power output	1200W	2000W
Frequency response	36Hz-200Hz	36Hz-200Hz
Max. rated SPL	129dB	129dB
Nominal impedance	8Ω	8Ω
SPL @ 1W / 1m	102dB	102dB
Speaker	CTB-118 -1200SUB	CTB-118 -2000SUB
Dimensions (L x B x H)	600 x 597 x 880mm	600 x 597 x 880mm
Weight	60Kg	60Kg



CTB-118

LINE ARRAY SPEAKER CLA-210



www.cksacoustics.com

Double 10"/2 way full range with 3" HF driver

The CLA-210 is a high-performance line array speaker designed to deliver exceptional sound quality and power of 2000 W, it provides robust audio performance suitable for large scale events and professional sound systems. Its line array configuration ensures even coverage and consistent sound distribution, making it ideal for both indoor and outdoor venues. The CLA-210 is engineered to handle high power levels while maintaining clarity and precision across a wide frequency range.



SPECIFICATION	CLA-210
Input power (continuous)	1000W
Input power (music)	1500W
Input power (peak)	2000W
Frequency response	65Hz-20KHz \pm 3dB
Sensitivity	108dB SPL - 1W/1m
Max sound pressure level	125dB
Rated impedance	4 Ω
Input interface	2 x Speakon socket
Crossover frequency	2500Hz (Full Network)
Ferrite LF driver	2 x 10" (CK10-600N)
Neodymium HF driver	1 x 3" (CK2-120N)
Size (H x W x D)	470 x 390 x 720mm
Net weight	37.88Kg / Pc



SIDE VIEW



CARRYING HANDLE



BACK SIDE

SPEAKER COMPONENT

LOW FREQUENCY PROFESSIONAL BASS

CK21-2400SUB



Power - 2400W
Voice coil - 6"
Magnet type - 320mm Ferrite
Speaker type - Low frequency professional bass
Frequency response - 35Hz - 1.5KHz
Impedance - 8Ω

CK18-2500SUB



Power - 2500W
Voice coil - 5.5"
Magnet type - 280mm Ferrite
Speaker type - Low frequency professional bass
Frequency response - 35Hz - 1.5KHz
Impedance - 8Ω

CK18-2000SUB



Power - 2000W
Voice coil - 5"
Magnet type - 280mm Ferrite
Speaker type - Low frequency professional bass
Frequency response - 35Hz - 2KHz
Impedance - 8Ω

CK18-1200SUB



Power - 1200W
Voice coil - 4.5"
Magnet type - 280mm Ferrite
Speaker type - Low frequency professional bass
Frequency response - 35Hz - 2.5KHz
Impedance - 8Ω

SPEAKER COMPONENT PROFESSIONAL MID BASS



www.cksacoustics.com

CK15-800N



Power - 800W
Voice coil - 4"
Magnet type - Neodymium
Speaker type - Professional Mid Bass
Frequency response - 40Hz - 3.5KHz
Impedance - 8Ω

CK15-800BMB



Power - 800W
Voice coil - 4"
Magnet type - Ferrite
Speaker type - Professional Mid Bass
Frequency response - 40Hz - 3.5KHz
Impedance - 8Ω

CK15-600RMB



Power - 600W
Voice coil - 4"
Magnet type - Ferrite
Speaker type - Professional Mid Bass
Frequency response - 45Hz - 3KHz
Impedance - 8Ω

CK15-450BMB



Power - 450W
Voice coil - 3"
Magnet type - Ferrite
Speaker type - Mid Bass
Frequency response - 40Hz - 4KHz
Impedance - 8Ω

CK15-400BMB



Power - 400W
Voice coil - 3"
Magnet type - Ferrite
Speaker type - Mid Bass
Frequency response - 40Hz - 4KHz
Impedance - 8Ω

CK15-450E



Power - 250W
Voice coil - 2"
Magnet type - Ferrite
Speaker type - Professional Mid Bass
Frequency response - 50Hz - 4.5KHz
Impedance - 8Ω

SPEAKER COMPONENT PROFESSIONAL MID BASS

CK12-600N



Power - 600W
Voice coil - 3.5"
Magnet type - Neodymium
Speaker type - Professional Mid Bass
Frequency response - 45Hz - 2KHz
Impedance - 8Ω

CK12-450BMB



Power - 450W
Voice coil - 3"
Magnet type - Ferrite
Speaker type - Professional Mid Bass
Frequency response - 40Hz - 3.5KHz
Impedance - 8Ω

CK12-250BMB



Power - 250W
Voice coil - 2"
Magnet type - Ferrite
Speaker type - Professional Mid Bass
Frequency response - 45Hz - 4KHz
Impedance - 8Ω

CK12-200RMB



Power - 200W
Voice coil - 2"
Magnet type - Ferrite
Speaker type - Professional Mid Bass
Frequency response - 40Hz - 4KHz
Impedance - 8Ω

CK10-450BMB



Power - 450W
Voice coil - 3"
Magnet type - Ferrite
Speaker type - Professional Mid Bass
Frequency response - 40Hz - 3.5KHz
Impedance - 8Ω

CK10-450N



Power - 450W
Voice coil - 3"
Magnet type - Neodymium
Speaker type - Professional Mid Bass
Frequency response - 50Hz - 2.5KHz
Impedance - 8Ω

SPEAKER COMPONENT PROFESSIONAL HF DRIVER



www.cksacoustics.com

CK2-850



Sensitivity - 105dB \pm 2dB
Frequency response - 700Hz - 18KHz
Power - 110W
Impedance - 8 Ω

CK2-750



Sensitivity - 106dB \pm 2dB
Frequency response - 800Hz - 18KHz
Power - 100W
Impedance - 8 Ω

CK1-550



Sensitivity - 110dB \pm 2dB
Frequency response - 1200Hz - 20KHz
Power - 60W
Impedance - 8 Ω

CK1-450



Sensitivity - 110dB \pm 2dB
Frequency response - 1000Hz - 20KHz
Power - 50W
Impedance - 8 Ω

CK2-1000



Sensitivity - 106dB \pm 2dB
Frequency response - 700Hz - 19KHz
Power - 100W
Impedance - 8 Ω

CK64-20FR



Sensitivity - 96dB \pm 3dB
Frequency response - 120Hz - 9KHz
Power - 20W
Impedance - 4 Ω

CKX-450 MK2



FEATURES:

Advanced Networking Solution: The CKX-450 MK2 Speaker Network Plate is engineered for seamless integration and reliable performance, offering enhanced connectivity for professional audio systems.

High Quality: Constructed with premium materials and cutting-edge technology, this network plate guarantees durability and longevity in demanding environments.

Versatile Compatibility: Compatible with various audio and control systems, making it a versatile choice for sound engineers, event organizers, and venue managers.

Easy Integration: Designed for effortless installation, the CKX-450 MK2 Network Plate can be quickly incorporated into existing systems, improving overall setup efficiency.

Rugged Construction: Built to withstand the rigors of touring and installation, it features a robust, professional-grade finish that ensures reliability under heavy use.

Usage: Supports 450 HF Driver (upto 60 Watt) for powerful and consistent performance.

Perfect for Large-Scale Events: Ideal for use in concert halls, theatres, arenas, and other venues where high-performance network connectivity is critical for smooth and uninterrupted operations.

CKX-750 MK2



FEATURES:

Premium Construction: The CKX-750 MK2 Speaker Network Plate features a robust design, ensuring durability and longevity for professional audio setups.

Efficient Connectivity: Equipped with high-quality components for seamless signal distribution and minimal loss during transmission.

Precision Engineering: Designed to complement high-performance sound systems, delivering clarity and efficiency.

Universal Compatibility: Supports integration with a wide range of CKS Acoustics equipment for versatile usage.

User-Friendly Design: Easy to install and maintain, making it a reliable choice for audio professionals.

Usage: Compatible with 750 HF Driver (upto 120 Watt), delivering powerful and efficient performance.

CKS CONFERENCE SYSTEM



www.cksacoustics.com

CONFERENCE SYSTEM SOLUTION FOR EVERY SPACE SIZE AND PURPOSE

Meeting Room

Board Room

Huddle Room

Ideation Space

Reconfigurable space

Lecture Theatre

Auditorium

Lobby

Retail



CKC-550HDMI /CKC-550E CKC-551C / CKC-552D



CKC-550HDMI



CKC-550E



CKC-551C / CKC-552D

FEATURES

- Patent appearance design, high-end and solemn.
- 20Hz~20KHz professional hi-fi condenser capsule, good sensitivity, clear sound quality.
- Advanced circuit design, anti-interference.
- Red ring indicator shows the ON/OFF button.
- With LCD window.
- Built-in speaker and earphone output the volume can be set by main controller.
- Voice active function, the units turn on once the spokesman talk.
- Support multi chairman units, and the chairman unit can connect any position (CKC-551C).
- Hand-in-hand connecting, easy to install and maintain.

FEATURES

- Adopt all-digital conference technology, developed based on digital network architecture, built-in high-performance CPU processor, faster processing speed, better sound quality, support discussion, video tracking functions.
- High performance switching power supply, long-distance transmission will not have any impact on sound quality.
- Anti-interference circuit design to eliminate all interference from mobile phone signals.
- 3.5" full view IPS TFT screen, intuitive display & easy adjustment of system parameters.
- Support USB recording, high-fidelity WAV format output.
- With 4 channels of 8-core microphone unit interface, each channel supports 30 units, can be connected to 120 units.

SPECIFICATION	CKC-550HDMI / CKC-550E
Power supply	AC110V-220V/50Hz
Frequency response	20Hz-20KHz
S/N ratio	>96dBA
THD	<0.05
Recording connector	USB
Input connector	DIN-8 x4, RJ45 x3 (group)
Central controller connector	RS-232 (3P connector) x 1
Camera switch connector	6P connector
Computer connecting	USB x 1, RJ45 x 1
Audio input	RCA (unbalanced) x 1
Audio output	XLR (balanced) x 1, 6.35mm(unbalanced) x 1, RCA (unbalanced) x 3
Size (L x W x H)	483 x 265 x 88mm

SPECIFICATION	CKC-551C / CKC-552D
Working voltage	24VDC
Cable	8P-DIN
Capsule	Cardioid
Sensitivity	-46dBV /Pa
Frequency response	20HZ-20KHz
Input impedance	2KΩ
Directional 0° / 108°	>20dB (1KHz)
Equivalent noise	20dB
SPL	125dB (THD<3%)
S/N ratio	>80dB
THD	<0.05%
Built-in speaker	8Ω / 2W
Earphone load	>10Ω
Earphone volume	10mV
Earphone jack	3.5mm x 1
Size (H x W x L) / Weight	52 x 125x 185mm / 630Gm

WIRED CONFERENCE SYSTEM CKC-1000



www.cksacoustics.com

CCU-1000 SH CCU-1001 C / CCU-1002 D



CCU-1000 SH



FEATURES

Video tracking/voting/scoring and election/discussion and amplification functions

Zinc alloy casting base, aluminium alloy sand blasting and colouring process panel, elegant and stable.

HD LCD displays : voting result/microphone on/off status and dynamic level and volume control.

Various operating modes : limit/FIFO/free/chairman priority modes.

Various holder camera ball control protocols : Pelco-P, VISCA-SONY-D70, SAMSUNG, Pelco-D protocols.

Microphone built-in SCM control circuit.

Ultra-long service life, noise-free touch switch.

Hi-Fi dual-track earphone jack

315-degree single-section omnidirectional bending flexible stainless-steel tube.

Built-in Hi-Fi condenser sound head makes excellent sound production, high articulation and low noise.

Efficient whistling inhibition function, powerful pickup.

With microphone switched on, the blue sound head operating indicator is illuminating.

The chairman unit with priority speech switch to switch off all attended delegate units when needed.

FEATURES

- Each central processing unit can connect to 60 microphone units, and has 6 RJ45 interfaces and 3 DIN (8-core wire) interfaces for more stable and reliable data transmission
- Flying shuttle one click operation of various functions, user-friendly menu setting, making operation easier.
- Add extender to support 512 microphone units.
- The maximum number of microphones supported by the chairman is 12
- The system's total output volume, Mp3 playback volume, and microphone/speaker volume can be individually adjusted.
- Data communication interfaces : RS-485, RS-232, RS-232/RX, RJ45.
- The 2.0-inch TFT high-definition colour display screen on the control panel displays the working mode and status more intuitive.
- There is one USB port on the front panel, which can be plugged into a USB flash drive to record conference audio and play Mp3 files. There is also one USB sound card port on the back panel, which can be connected to a computer for audio signal exchange.
- Connected to a PC, electronic check-in, voting, election, scoring, and other functions can be performed through the built-in software.
- Intelligent video automatic tracking function.
- Four in two out HDMI seamless switching matrix function, capable of simultaneously connecting 4 high-speed ball video signals.
- Various operating modes : Limit mode/FIFO mode/free mode/Chairman priority mode
- Various holder ball head control protocol, strong compatibility : Pelco-P, VISCA-SONY, SAMSUNG Pelco-D protocols.

SPECIFICATION	CCU 1000 SH
Rated voltage	AC220V $\pm 10\%$, 50Hz
Frequency response	20Hz-20KHz
Output impedance :	
REC	200 Ω
Line	200 Ω
Balance	300 Ω
No balance	400 Ω
SNR	78dB (1KHz THD 1%)
Dimensions	485 x 340 x 88mm (2U" international standard rack)
Weight	12.7Kg

SPECIFICATION	CCU-1001 C / CCU-1002 D
Type	Condenser
Directivity	Unidirectional
Frequency Response	20HZ-20KHz
Sensitivity	45 ± 2 dB @ 1KHz
Input voltage	DC 24V (powered by central processor)
Minimum O/P impedance	1K Ω
S/N Ratio	68dB (A)
Equivalent noise	20dB
Output socket	8P terminal base
Input lead wire	2.1m 8P shielded wire
Accessory	wind proof sponge cover

CSM-6000E / CSM-6000C / CSM-6000D



CSM-6000E



CSM-6000C / CSM-6000D

CSM-6000CP / CSM-6000DP



CSM-6000CP / CSM-6000DP

FEATURES

- Patent appearance design, high-end and solemn.
- 20Hz~20KHz professional hi-fi condenser capsule, good sensitivity, clear sound quality.
- Advanced circuit design, anti-interference.
- Red ring indicator shows the ON/OFF button.
- With LCD window.
- Built-in speaker and earphone output the volume can be set by main controller.
- Voice active function, the units turn on once the spokesman talk.
- Support multi chairman units, and the chairman unit can connect any position (CKC-551C).
- Hand-in-hand connecting, easy to install and maintain.

FEATURES

- Adopt all-digital conference technology, developed based on digital network architecture, built-in high-performance CPU processor, faster processing speed, better sound quality, support discussion, video tracking functions.
- High performance switching power supply, long-distance transmission will not have any impact on sound quality.
- Anti-interference circuit design to eliminate all interference from mobile phone signals.
- 3.5" full view IPS TFT screen, intuitive display & easy adjustment of system parameters.
- Support USB recording, high-fidelity WAV format output.
- With 4 channels of 8-core microphone unit interface, each channel supports 30 units, can be connected to 120 units.

SPECIFICATION	CSM-6000E
Power supply	AC : 110V-220V/50Hz
Frequency response	20Hz-20KHz
S/N ratio	>96dBA
THD	<0.05
Recording connector	USB
Input connector	DIN-8 x4, RJ45 x3 (group)
Central controller connector	RS-232 (3P connector) x 1
Camera switch connector	6P connector
Computer connecting	USB x 1, RJ45 x 1
Audio input	RCA (unbalanced) x 1
Audio output	XLR (balanced) x 1, 6.35mm(unbalanced) x 1, RCA (unbalanced) x 3
Size (L x W x H)	483 x 265 x 88mm

SPECIFICATION	CSM-6000C / CSM-6000D
Working voltage	DC24V
Cable	8P-DIN
Capsule	CARDIoid
Sensitivity	-46dBV /Pa
Frequency response	20HZ-20KHz
Input impedance	2KΩ
Directional 0° / 108°	>20dB (1KHz)
Equivalent noise	20dBA (SPL)
SPL	125dB (THD<3%)
S/N ratio	>80dB
T.H.D.	<0.05%
Built-in speaker	
Earphone load	>10Ω
Earphone volume	10mV
Earphone jack	3.5mm x 1
Size (H x W x L) / Weight	145 x 45 x 4mm / 0.45Kg

WIRED CONFERENCE SYSTEM

CCU-7000SH



www.cksacoustics.com

Camera tracking, Discussing & Voting

CCU-7000SH

CKS CONTROLLER UNIT



SUMMARY

This is a new intelligent full-function digital conference system, which perfectly introduces all digital technology and integrated network technology into the conference system, and fully combines advanced digital technology, network technology and audio technology. It can be seamlessly connected with intelligent central control system, video conference system and fire monitoring system, providing a more complete solution for efficient modern conference system engineering.

FEATURES:

- With 4.3 inch full-view IPS capacitive touch screen, intuitive display and easy adjustment of system parameters.
- Support USB recording, high-fidelity WAV format output.
- With 4 groups of RJ45 and 4-way 8-pin microphone interfaces.
- Support multiple speech modes.
- The number of speakers can be set to 1-8, and the chairman unit is not limited.
- With conference service function, speaking unit can apply for tea, coffee, paper, pen, service personnel and other services
- Built-in 5-band equalized audio processing.
- Support TCP/IP network management, Support Android/Microsoft Windows system operation.
- With multi-channel 232 and 485 control interface, support to connect cameras, high-definition matrix and control system.
- With multi-channel audio output, it is convenient to connect sound reinforcement system and recording and broadcasting system.
- Support HDMI switch (optional).

SPECIFICATION	CCU 7000SH
Power supply	AC : 110V-220V/50Hz
Frequency Response	20Hz-20KHz
S/N ratio	> 96dBA
THD	< 0.05%
Recording connector	USB
Input connector	DIN-8x4, RJ45x4(group)
Central controller connector	RS-232 (3P connector) x 1
Video connector	HDMI 4x1 (if necessary)
Camera control connector	6P connector
Computer connecting	USBx1, RJ45 x 1
Audio input	2P connector (unbalance) x 1
	3P connector (balance) x 1
	XLR (balance) x 1
	6.35mm (unbalance) x 1
	RCA (unbalance) x 3
	Coaxial x 1
	Optical Fiber x 1
	Sound card (unbalance)
	2P connector x 2
Weight	11.0Kg
Colour	Black

Camera Tracking, Discussing & Voting

CTC-7001 (CHAIRMAN UNIT)

CTD-7002 (DELEGATE UNIT)

This is a new intelligent wired economical digital full function including camera tracking, discussing & voting conference system, which perfectly introduces all digital technology and integrated network technology and audio technology. It can be seamlessly connected a more complete solution for efficient modern conference system engineering.



FEATURES:

- Metal panel design, the overall high-grade solemn, in line with modern aesthetic standards.
- The unit is powered by the system host. The input voltage is 24V, which is a safe range.
- Unit with 8-core wire interface adopts T-type 8-core connection, and the wire is shielded by full-line Aluminum foil, which greatly reduces the interference of strong electromagnetic waves on the wire.
- The unit of the network cable interface adopts super cat-6 network cables, "hand in hand" cable connection mode.
- Professional high-fidelity capacitor microphone, sensitive pick-up, clear voice, bandwidth up to 20Hz-20KHz
- Adopt anti-interference circuit design to prevent interference from electronic products such as mobile phones.
- The microphone head has a two-color speaking light ring, the light ring is always red when the unit speaks, and the light ring is always green when the unit request to speak.
- The sensitive touch switch is matched with the long light bar, the light bar is always bright green when standby, light bar is always bright red after pressing, and also has colour switching function.
- With 3.5-inch capacitive IPS touch screen, the display content is clear, can display the voting, voting mode, unit parameters, date and time, speaking volume, monitoring volume, etc. that are being operated, and clearly understand the current using situation.
- With screen saver function and at least 6 screen savers can be selected.
- Microphone with speaking timing function.
- The microphone unit has a headphone output port and a volume adjustment button, which can freely select the output mode and adjust its volume.
- "Hand in hand" connection method, support hot plug, easy installation and maintenance.
- The chairman unit has the function of approving the speech request of the delegate.
- The chairman unit is not limited by the number of speakers.
- The chairman unit has the priority function of controlling the order of conference.
- The connection position of the chairman unit is not restricted.
- The chairman unit can initiate sign-in, voting, election and other functions.
- A system can support the use of multiple chairman units at the same time.

SPECIFICATION	CTC 7001/CTD 7002
Working voltage	DC 24V
Cable	DIN-8p or RJ45
Capsule	Cardioid
Sensitivity	-46 dBV/Pa
Frequency response	20Hz-20KHz
Input impedance	2KΩ
Directional 0°/180°	> 20dB (1KHz)
Equivalent noise	20dBA (SPL)
SPL	125dB (THD<3%)
S/N ratio	> 80dB
Cross talk	> 80dB
THD	< 0.05%
Display	3.5" IPS TFT
Earphone load	> 10Ω
Earphone volume	10mW
Earphone jack	3.5mm x 1
Size (LxWxH)	Base : 100.5 x 160.7 x 31.9mm
Cross talk	Gooseneck Mic : 420mm
Weight	Base : 0.71Kg
	Gooseneck Mic : 0.07Kg
Colour	Black
Installation	Desktop style
Transport	-40°C to +70°C
Operating	0°C to +45°C
Max relative humidity	< 95% (not condensing)

WIRED CONFERENCE SYSTEM

CTC-8001 / CTD-8002



www.cksacoustics.com

Camera Tracking, Discussing & Voting

CTC-8001 (CHAIRMAN UNIT)

CTD-8002 (DELEGATE UNIT)

This is a new intelligent wired economical digital full function including camera tracking, discussing & voting conference system, which perfectly introduces all digital technology and integrated network technology and audio technology. It can be seamlessly connected a more complete solution for efficient modern conference system engineering.



FEATURES:

- Metal panel design, the overall high-grade solemn, in line with modern aesthetic standards.
- The unit is powered by the system host. The input voltage is 24V, which is a safe range.
- Support 8-core cable and network cable dual back-up connection.
- With T-type 8-core connection, and the wire is shielded by full-line aluminum foil, which greatly reduces the interference of strong electromagnetic waves on the wave.
- With super cat-6 network cables, "hand in hand" cable connection mode, with two RJ45 interfaces.
- Professional high-fidelity capacitor microphone, sensitive pickup, clear voice, bandwidth up to 20Hz ~ 20KHz
- Adopt anti-interference circuit design to prevent interference from electronic products such as mobile phones.
- The microphone head has a two-color speaking light ring, the light ring is always red when the unit speaks, and the light ring is always green when the unit requests to speak.
- Mechanical switch design, the pattern is always bright green when standby, the pattern is always bright red after pressing, and also has color switching function.
- With a 2.4-inch high-brightness IPS TFT display, the display content is clear, can display the voting, voting mode, unit parameters, date and time, speaking volume, mounting volume etc. That are being operated, and clearly understand the current using situation.
- Microphone with speaking timing function.
- The microphone unit has a speaker and a headphone output port with volume adjustment button, which can freely select the output mode and adjust its volume.
- "Hand in Hand" connection method, support hot plug, easy installation and maintenance.
- The speaking unit can apply for tea, pen, help services.
- The chairman unit has the function of approving the speech request of the delegate.
- The chairman unit is not limited by the number of speakers.
- The chairman unit has the priority function of controlling the order of the conference.
- The connection position of the chairman unit is not restricted.
- The chairman unit can initiate sign-in, voting, election and other functions.
- A system can support the use of multiple chairman units at the same time.

SPECIFICATION	CTC 8001/CTD 8002
Working voltage	DC 24V
Cable	DIN-8p & CAT6
Capsule	Cardioid
Sensitivity	-46 dBV/Pa
Frequency response	20Hz-20KHz
Input impedance	2KΩ
Directional 0°/180°	>20dB (1KHz)
Equivalent noise	20dBA (SPL)
SPL	125dB (THD<3%)
S/N ratio	> 80dB
Cross talk	> 80dB
THD	<0.05%
Display	2.4" IPS TFT
Built-in speaker	8Ω / 5W
Earphone load	> 10Ω
Earphone volume	10mW
Earphone jack	3.5mm x 1
Cross talk	Gooseneck Mic : 420mm
Size (LxWxH)	Pane: 290 x 58 x 4mm
	Base: 0.92Kg
	Gooseneck Mic: 0.07Kg
Colour	Black
Installation	Embedded style

CWC-9000

WIRELESS CONFERENCE SYSTEM CONTROLLER

DESCRIPTION:

CWC-9000 is a Novel shape design with built-in antenna, nice-looking and appropriate preferred choice for large and small sized conference projects. The main control machine can be connected to the central control, and the central control to deliver video tracking function for delegate units at conference site. Each unit is powered by chargeable lithium battery and completed with mini USB charger, convenient and environmental protection.

SPECIFICATION	CWC-9000
Mode of communication	UHF digital wireless mode (bidirectional)
Range of frequency	500MHz-980MHz
Mode of demodulating	FM
Receiving sensivity	-100dBm
Signal coverage	indoor radius 60m
Audio frequency response	50Hz-15KHz
Total audio gain	≤20dB
SNR	> 85dB
Total audio harmonic distortion	≥0.8%
Power input	DC12V-15V, ≥1A
Consumption power	< 7W



CWC-9000

FEATURES:

The system is operated under full digital mode and various speaking modes.

Using DQPSK digital modulation, Hi-Fi, high SNR and without sound delay. The audio channel and control signal are transmitted wirelessly so layout of the conference site is flexible.

System delegate unit capacity ≤ 2000pcs (including 5 chairman unit)

Ultra-low power consumption provides the delegate unit with more than 6 hours continuous speaking and more than 20 hours standby.

WIRELESS CONFERENCE SYSTEM MICROPHONE

CWC-9001C (CHAIRMAN UNIT)

CWC-9002D (DELEGATE UNIT)



CWC-9001C



CWC-9002D

SPECIFICATION	CWC 9001C / CWC 9002D
Operating power	DC 3.7V - 5V
Consumption power	standby≤360mW, Speaking status≤630mW
Operating temperature	10°C-40°C
Mode of communication	UHF digital wireless mode (unidirectional)
Channel number	6 channels
Range of frequency	500MHz - 980MHz
Mode of modulating	FM
Maximum modulated quantity	60K
Radiation power	≤ +9dBm
Frequency deviation	<0.002
Reference speaking distance	30cm-50cm

DESCRIPTION:

CWC-9001C / 9002D has more than 6 hours of continuous speaking time and 20 hours of standby time. Power display and undervoltage warning, frequency channel and signal indication functions.

FEATURES:

Electronic volume adjustment, with one-key anti-cough mute function.

Built-in high-capacity rechargeable lithium battery, each microphone unit is equipped with a dedicated charger.

The built-in antenna, ultra-low power consumption.

The built-in Hi-Fi condenser sound head delivers superior sound reproduction, high articulation, low noise, efficient whistling inhibition function and powerful sound pickup.

Power display and under voltage warning, frequency channel and signal indication functions.

WIRELESS CONFERENCE SYSTEM CWC-9003CH



www.cksacoustics.com

CWC-9003CH UNIT CHARGER



DESCRIPTION:

Built-in high-power switch power supply charges 28 wireless conference microphone units, featuring high-efficiency charging, overpower protection function, over current protection function and short-circuit protection function.

SPECIFICATION	CWC 9003CH
Input	AC : 200-240V 50/60Hz 200W max
Output	DC 5V, 21000mA
Efficiency	75% typical, under full load
Output voltage tolerance	±5%
Low standby power consumption	0.5W max
Output port	28 channels standard USB port

CWC-9004AD ANTENNA AMPLIFIER

DESCRIPTION:

A UHF active wireless directional antenna with dual-polarization with 1/2-wavelength omnidirectional antennas, the cardioid pickup pattern can more effectively receive signals in a predetermined coverage area, and more effectively cover radio frequency signals outside the area.



SPECIFICATION	CWC 9004AD
Frequency range	450-970MHz
Connector type	BNC, jack
Impedance	50Ω
Power requirements	10 to 15VDC offset from coaxial connection, 75mA
Receiving mode (3dB beam width)	70 angle
Antenna gain (on axis)	7.5dBi
Signal gain	±1dB
Switchable active	+12dB, +6dB
	Passive: 0dB, -6dB
RF signal is too strong indicator threshold	-5dBm
Third-order overload intercept point (OIP3)	>30dBm

FEATURES:

The antenna amplifier is powered by a remote 12V DC power supply and is provided by the antenna distribution system through a coaxial cable.

The gain setting is displayed by two LED lights.

The on-board amplifier provides the user with a selectable 3dB or 10dB gain

It can be mounted on a microphone stand, hang on the ceiling or mounted on the wall using a rotating adapter bracket.

It can resist the influence of bad weather and is suitable for outdoor use.

Use two antennas to get the best diversity performance.

CWC-9005FR FEEDBACK REDUCER

DESCRIPTION:

The CWC-9005FR four-channel automatic high-speed feedback suppressor uses a powerful signal processor to suppress the occurrence of acoustic feedback. By adding shielding noise (inaudible noise) to the output signal, or changing the frequency of the output signal by 5Hz, the CWC-9005FR feedback suppressor can detect the component that causes reverberation in the signal and remove it before the feedback appears, while keeping the initial signal intact. The feedback suppressor also has a built-in automatic mixer to achieve 4 microphone inputs. It uses echo cancellation and reverberation elimination algorithms to effectively filter room reverberation.



FEATURES:

- 4-channel balanced line or microphone input, providing phantom power.
- Adaptive filter can switch between "fast" mode and "precise" mode.
- 2.2 inch color LCD display.
- Ultra-wide frequency response circuit technology, no sound change, no metal tail, strong echo suppression.
- Super stable: Built-in crystal oscillator, software algorithm, stable performance, little temperature and external interference.

SPECIFICATION	CWC 9005FR
Number of input channels	4 channels (4 channels balanced input or select 4 channels 6.35 unbalanced input)
Power supply voltage	4 channels 48V phantom power supply
Rated voltage	220V \pm 10% 50Hz
Frequency response	125Hz~15KHz (voice mode) / 20Hz~15KHz (music mode)
Distortion	> 0.1% @ 1KHz
Signal to noise ratio	> 90dB
Signal delay	7mS (music mode) / 11mS (voice mode)
Input impedance	20K Ω
Output impedance	(balanced) 200 Ω
Temperature range	-10~55°C
Weight	2.5Kg
Size	480 x 212 x 44mm

CWC-9006WS CONFERENCE WALL SPEAKER



Description:

- Suitable for large/medium/small meeting rooms, banquet halls, classrooms and other occasions.
- Stylish design, wooden cabinet.
- Water resistance, scratch proof color.
- High power & high efficiency SPL.
- Powder coated front metal grill.

SPECIFICATION	CWC 9006WC
Type	Internal structure of two-way front-out ported horn
Woofer	165mm (6.5") cone-shaped speaker x 1
Tweeter	76mm (3") cone-shaped speaker x 1
Nominal impedance	8 Ω
Frequency response	55Hz~20KHz

DIGITAL POWER AMPLIFIER CWC-9007D AMP



www.cksacoustics.com

POWER AMPLIFIER CWC-9007D



FEATURES:

- It is equipped with an on-board color display, flexible channel parallel connection and bridge connection, and 70V drive.
- Provide a secondary energy recovery mode without degrading performance.
- The system set-up wizard helps you choose the correct preset.
- Provide excellent performance to ensure that the energy consumption during the life of the device is maintained at the lowest level.
- It is a high-performance and complex speaker processor, that the operation of the amplifier can become more accurate and efficient.

POWER SEQUENCER CWC-9010 IPS

DESCRIPTION:

This machine is a compact and powerful intelligent timing device with DSP as the processor, it integrates the functions of a variety of conventional products in a cabinet with a height of only 1U rack. 10 sets of device switch scene data are saved/recalled, and the scene management application is simple and convenient. The 2-inch color LCD smart display window can display the current voltage, date and time, and channel switch status in real time.

SPECIFICATION	CWC 9010 IPS
Rated output voltage	AC : 220V/50Hz
Controllable power supply	8 channels + 20/P aux channels
Delay time of each action	0 to 999 seconds
Power supply	AC : 220V 50/60Hz, 30A
Single channel rated O/P current	13A
Rated total output current	30A
Timer function	Yes
Gross weight	6.0Kg
Packing size	536 x 410 x 80mm

DESCRIPTION:

The power amplifier is specially designed for system integration. Using CLASS-D technology. According to different models, the output size of one to four channels can be independently controlled, and can drive 70V or 100V speaker output through the bridge channel. Device can display power, voltage and current. In addition, the proven LLC power supply and a more efficient and controllable switching power supply with current output enable a single standard AC circuit breaker to carry high power.

SPECIFICATION	CWC 9007D AMP
Out power(8Ω)	350W x 4
Out power(4Ω)	500W x 4
Bridge power(8Ω)	1000W x 4
Frequency response	20Hz-20KHz (±3dB)
THD 20Hz-20KHz/8Ω	<0.05%
Noise	>95dB
Slew Rate	40V/μs
Damping factor	>300
Input sensitivity	1.2V
Input impedance	20KΩ (balanced)
Input connectors	3-pin XLR, balanced signal input
Output circuitry	Class-D
Output connectors	Terminal
Protection	Circuit, open circuit, overheat and RF protection, load protection for DC fault
Cooling pattern	Fan
Power supply voltage	220V



FEATURES:

- 8-channel switch channel output, each delay opening and closing time can be set freely (range 0-999 seconds. The unit is second).
- Support the panel lock function to prevent mis-operation.
- Built-in clock chip can set the automatic switch machine according to the date and time, without manual operation.
- Support cascading sequence control of multiple devices, cascading automatic detection settings.
- Configure 232 interface, support external central control equipment control.
- Each device has its own ID setting and detection, which can realize remote centralize control.

DSP-0404ND2 / DSP-0808ND2 / DSP-1616ND2

DESCRIPTION:

The DSP-0404ND2 / DSP-0808ND2 / DSP-1616ND2 audio processor combines Auto mixer, matrix mixer and feedback suppressor in one purpose-built DSP processor, with built-in sound card. At the same time, it has independent FIR/AFC/AEC/ANS/AGC gain sharing automatic mixing, threshold automatic mixing and other processing modules. The includes 4/8/16 Mic/line analog inputs / outputs to meet the needs of a wide range of audio processing applications such as boardroom, medium/large conference rooms, auditoriums and multipurpose halls.

FEATURES

- 4/8/16 analog balanced input / output, with a maximum input /output of 17dBu (5.48VRMS) without distortion.
- Stereo USB sound card function, supporting playback and recording.
- USB/RS232/RS485, network interface, computer software control and central control function, through the network connection can simultaneously manage multiple devices.
- External 8-channel GPIO interface.
- LCD screen, supporting configuration of device name/preset/IP, input/output volume, input mode, device version view and other functions.
- Input 15-band PEQ, output 10-band PEQ
- Input/output 2000ms delayer per channel
- Output 512 tap FIR per channel
- Input each channel voice excitation function (camera tracking), support with PELCO-D, PELCO-P, VISCA protocol, camera control
- 160 preset memory positions.
- Support line control box control, Android APP network control.
- Support archive locking, hide setting parameters, and ensure project technical security.

DSP-0404ND2



4 In 4 out DSP audio processor AFC, AUTOMIX, RS 232 & camera control, DANTE Ultimo 4 Channel

DSP-0808ND2



8 In 8 out DSP audio processor AFC, AUTOMIX, RS 232 & camera control, DANTE Ultimo 4 Channel

DSP-1616ND2



16 In 16 out DSP audio processor AFC, AEC, ANC, AUTOMIX, RS 232 & camera control, DANTE Ultimo 4 Channel

SPECIFICATION	DSP-0404ND2	DSP-0808ND2	DSP-1616ND2
Signal processing	32-bit fixed/floating-point DSP 400MHz	32-bit fixed/floating-point DSP 300MHz	
Signal processing	AFC, AEC, AND, AGC, AUTOMIX, MATRIX MIX, noise Gate, PEQ, input mode, device version view & other functions		
Audio system delay	<3ms	<1ms	<1ms
D/A	24-bit		
Sample rate	48KHz		
Analog audio I/P & O/P			
Input channel	4 balanced I/P, Mic/Line level	8 balanced I/P, Mic/Line level	16 balanced I/P, Mic/Line level
Audio interface	3.81mm Phonix plug,12pin	3.81mm Euro block	3.81mm Euro block
Input impedance	16.0KΩ	11.5KΩ	11.5KΩ
Max I/P level	17dBu (5.48Vrms)/Line-3dBu(0.54Vrms)		
	/ Mic@20dB Gain Gear		
Phantom power supply	+48VDC, 5.5mA, configured per channel +48VDC, 10mA, configured per channel		
Output Impedance	150Ω		
Frequency response	20Hz-20KHz(±0.5dB) Line, input 0dBu (0.775rms)	20Hz-20KHz(±0.5dB) Line, input 0dBu (0.775rms)	
	20Hz-20KHz(±1.5dB) Mic, 20dB gain gear input	20Hz-20KHz(±1.5dB) Mic	
	-10dBu (0.245Vrms)		
THD + N	-90Db@17dBu,1KHz, A-wt/Line	LINE: 0.003%	
	-90Db@-6dBu,1KHz, A-wt/Mic, 20dB Gain	MIC: 0.005%	
SNR	110dB@17dBu,1KHz, A-wt/Line	105dB@12dBu,1KHz, A-wt/Line	
	100dB@-6dBu,1KHz, A-wt/Mic, Gain	95dB@-7dBu,1KHz, A-wt/Mic	
Connection and Display			
USB	Type-B 2.0, No drive	Micro-B type, free driver	
Rs232	Serial port communication		
TCP / IP	RJ-45	RJ-45, Optional	
Indicator light	Link, +48V, input/output audio signal	Power, Link, +48V, input/output audio signal	
Electrical and physical parameters			
Power supply	90V-264V AC 50/60Hz	100V-240V AC 50/60Hz	
Operation temperature	20°C - 80°C	20°C - 60°C	
Dimension	483mm x 265mm x 44.5mm	483mm x 210mm x 44mm	

DIGITAL SIGNAL PROCESSOR

8-Zone/16-zone Paging Microphone Station



www.cksacoustics.com

DSP-M8V2 / DSP-M16V2



DSP-M8V2

DSP-M16V2

FEATURES

8 Zone remote microphone station for DSP-0808ND2 / 16 zone microphone station for DSP-1616ND2

Controls:

Zone selector switches for Z1-Z8 / Z1-Z16. Talk & Chime on/off. Level control volume for Mic & Chime.

Connectors:

Rs485 communication with DSP-0808ND2 / DSP-1616ND2 DC12V input.

Indicators:

Power, Busy, Signal, Clip

SPECIFICATIONS	DSP-M8V2
Rated O/P level / Impedance	0dB / 600Ω balanced
I/P sensitivity / Impedance	-36dB / 20KΩ balanced
Frequency response (-1dB)	80Hz - 15KHz
THD	<0.1%
Humming & Noise	>90dB
Number of zone	8 zones
Weight (Net)	750g
Dimensions (W x H x D)	15 x 60 x 195mm (only body)

SPECIFICATIONS	DSP-M16V2
Rated O/P level / Impedance	0dB / 600Ω balanced
I/P sensitivity / Impedance	-36dB / 20KΩ balanced
Frequency response (-1dB)	80Hz - 15KHz
THD	<0.1%
Humming & Noise	>90dB
Number of zone	16 zones
Weight (Net)	750g
Dimensions (W x H x D)	15 x 60 x 195mm (only body)

Audio Transmitter

DSP-4140



Features:

Ideal interface to increase the number of microphones or AUX inputs.

4 balanced line outputs can be used simultaneously and all audio channels are used with Dante network.

4balanced Mic/ Aux inputs, and also 4 outputs using phoenix connector.

CAT5/6 connector to link with Dante network and controlled by Audinate.

Small size integrated mounting bracket which can be installed in very limited space.

SPECIFICATIONS	DSP-4140
Input	4 balanced / unbalanced input
I/P impedance	> 1800Ω
Max I/P level	+dBu 0dB gain
O/P impedance	200Ω balance
Max O/P level	+20dBu balance
Require response	20-20KHz, +1dB
THD	<0.02%
Power requirements	12VDC or POE
Dimensions	123 x 75 x 35mm

ABT-4T4



Features:

4-channel by 25W bluetooth wall amplifier. This 2-4 channel small bluetooth multi-home audio system equipped with micro USB/TF can power 2 to 8 pieces of speakers in your home or small commercial area. It uses a high-efficiency class-D amplifier for a maximum output of 2 x 25 or 4 x 25W, low-impedance speakers. Plus, you can control everything- seek, change tracks and adjust the volume- using the included wireless infrared remote controller.

DWC-8



Features:

Control protocol UDP communication protocol address setting method TCP/IP signal cable length 100meters power supply POE power supply connection port RJ-45 power consumption <100mw color white material aluminum ally sandblast.

2 Channel Dante Converter



FEATURES

Convert 2 channels of analog line input signals to a Dante network.

High resolution 24bit analog to digital conversion.

AES67 compliant.

Powered by power over Ethernet switch or a POE injector (802.3 af/at class 1) or DC 5V via micro USB connector.

CKC-1616



Specifications:

CKC-1616 / CKC-1608 / CKC-0808 is a powerful digital audio processor with 16/8 inputs, 16/8 outputs with touch screen operation control interface display. Ultra-low noise floor pre-amplifier circuit, low distortion analog circuit, 114dB audio AD/DA.

It is convenient for the administrator to quickly identify and distinguish the current processor when there are multiple processors in the system. The front panel has a network connection status indicator and an error alarm indicator. When there is a serious error, it can flash a red alarm. It can be connected to the Android system and supports smart phones or tablets to control the software package.

The control software is easy to understand and can be quickly operated without manual. Each input value can be directly entered with the keyboard to get the exact value. For complex parameter adjustments such as PEQ and limiter, the parameters can be quickly copied and pasted, and you can easily realize multi-channel data copying, and the operation is convenient.

DSP includes a 5-inch 16-bit true color (64K color) touch-sensitive display, which can adjust the volume of each channel, can call 32 sound effects scenes; displays the current IP address, the preset number currently used by the processor, and the preset name.

FEATURES

- Hi-performance floating-point DSP processing chip
- 16-channel balanced input audio channel, each MIC input supports 48V phantom power supply
- 16/8 balanced audio output channels
- 16-channel independent adaptive feedback suppressor
- 16 channel automatic mixing
- Input each channel : pre-amplifier, noise gate, compressor, 16-band parametric equalization, delay
- Output per channel : 16 band parametric equalization, frequency divider high and low pass filter, limiter, delay
- Built-in signal generator : Sine wave signal, pink noise, white noise
- The display on the front panel displays the IP address and the current preset
- Open RS-232, TCP/IP protocol to realize the camera linkage function through the third-party central control
- Camera tracking code output, easy to realize the camera linkage function through the third-party central control
- Support 32 sets of scene preset functions, which can be called through TCP/IP and RS-232 protocols.
- 1 USB telecommunication port.

Specifications:

- Audio input : 16 balanced inputs, Phoenix plug
- Nominal input level : +4 dBu line or -40dBu microphone level
- Microphone pre-amplifier gain : 0-40dB analog gain, 20dB digital gain
- Maximum input level : +20dBu
- Input impedance : >5KΩ balanced, >3KΩ unbalanced
- Common mode rejection ratio (CMRR): >70dB @ 1KHz
- Pre-amplified equivalent input noise (EIN): <-125dBu, 22Hz-22KHz
- Phantom power supply: +48VDC
- Audio output: 8/20 balanced line level, Phoenix plug
- Nominal output level: 0dBu line level
- Output impedance : 600Ω balanced
- DSP frequency and processing capacity : 400MHz, 400MIPS, 2200MFLOP
- Sampling frequency / quantization : 48KHz, 24Bit ADC, 24BitDAC
- Frequency response : 20Hz-20KHz, ±0.5dB
- Dynamic range : 114dB, ADC, DAC
- Total harmonic distortion : <0.01%, 20Hz~20KHz@+4dBu
- Crosstalk between channels: >80dB @ 1KHz, typical
- Equipment size (W x D x H) : 2U, 482mm x 380mm x 88mm
- Power supply : 100~240VA, 50/60Hz, 75W



CKC-1616



www.cksacoustics.com

PA FUNDAMENTALS

Some Commonly Used Connectors

Stereo EP Pin



Two-channel (left/right) electronic program connection for stereo audio reproduction commonly use for mobile phones & line out from small audio devices.

RCA Phono Plug



Unbalanced connector for audio/video signals, common in DJ and media devices.

XLR Female Socket



3-pin balanced connector, usually on mixers or microphones cables (input).

XLR Male Socket



3-pin balanced connector, usually on microphones (output).

Phono Jack



Single-channel audio jack with one ring, used for basic microphones.

Stereo Jack



Two-channel audio jack with two rings, used in mobiles and headphones.

Speakon Male



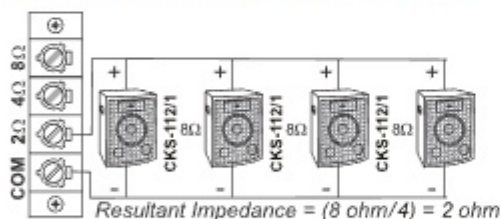
Locking high-power connector from amplifier to speaker.

Speakon Female



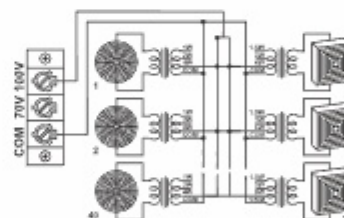
Locking high-power connector on speaker input.

Speaker Connection Guideline



Low Impedance Operation

All amplifiers in the CKS Acoustics range support the connection of low-impedance loudspeakers. When operating in low-impedance mode, short cable runs are recommended to minimize power losses and maintain optimal performance. Where multiple low-impedance loudspeakers are used to provide area coverage, they must be wired in appropriate series and/or parallel configurations to ensure the total load impedance remains within the amplifier's specified operating range.



Mic Cable Construction



Center conductor	21AWG, 14/0.193mm annealed Tinned copper
Insulation material	PVC
Core colour	Red, Black
Filler	Cotton threads
Shielding/ Braiding	65 (Nom)96 x 42 (SWG) ATC
Outer jacket	Soft PVC
Outer jacket colour	Various colour



Design and specifications are subject to change without notice owing to continues product up-gradation.
Technical specifications are subject to production tolerances.
We can not be held response for printing error, should they occur.
CKS is a registered trademark of CKS ACOUSTICS INDIA PRIVATE LIMITED.

Join with us :
+91 99780 10980
+91 63599 10980



✉ info@cksacoustics.com | sales@cksacoustics.com



CKS ACOUSTICS INDIA PRIVATE LIMITED
B1+B2+B3/1, Corner Plot, Inside GIDC Gate No. 1,
Near EQDC Circle (K-5), GIDC - Sector 25,
Gandhinagar, Gujarat-382024, Bharat (India)